

HIKVISION EUROPE

Monthly External Technical Newsletter

CONTENTS

New Firmware / Software Release
Product How to
Product Q&A

April 2025

Main Contents

01 New Firmware / Software Release

- Channel CCTV

02 Product How to

- How to Use Wireless Bridge

03 Product Q&A

- When does M series NVR support PTRZ camera and control them?
- For analog camera, will the FOV narrow when adjusting the resolution from high to low?
- Which kind of alarms can EUI NVR receive from Hikvision switch?

Editor-in-Chief: John Wu | Editor: David Jin | Executive Editor: Effie Ding



Contributions and feedback

An informative and inspiring newsletter needs your continual contributions and feedback. Please feel free to submit your comments to product.eu@hikvision.com.

01 New Firmware / Software Release

Channel CCTV

NVR	DS-7604NXI-K1 DS-7608NXI-K2 DS7708NXI-K4	V4.84.000build250306	<ul style="list-style-type: none"> Acusearch modeling speed, search efficiency, and interaction optimization Storage optimization, Acusearch can be used on SMR drive
IP SPEAKER	DS-QAZ1325G1T(O-STD)(C)/EU	V1.3.6_241127	<ul style="list-style-type: none"> Certain platform NVR supports Acusearch function to search vehicles AcuSearch modeling and search speed optimization Support filtering human and vehicle attributes on smart search results Web has been updated to the new web5.0, with a page style and operation are similar to GUI 5.0
NVS	DS-7102NI-S1/W DS-7104NI-S1/W/KIT NVR-104H-S/W NVR-104H-S/W/KIT	V4.32.204build250310	<ul style="list-style-type: none"> Support accessing new model IPC of 3/5MP and 6MP splicing IPC, such as DS-2CFW06-P V5.8.10_build250303 The kit NVS supports on-demand streaming, and disconnects streaming when there is no streaming task, saving 4G data Support AAC audio format for cameras
DVR	DS-7104HGHI-M1 DS-7216HGHI-M1/T DS-7116HGHI-K1(E)(S) HL-DVR-104G-K1(S)	V4.83.610 build 250222	<ul style="list-style-type: none"> Release new models HG-M(F)
DVR	iDS-7204HUHI-M1/X iDS-7204HQHI-M1/XT iDS-7204HTHI-M1/XT HL-DVR-204U-M1/T HL-DVR-208U-M1/T 7216HGHI-M1(F)	V4.83.701 build 250221	<ul style="list-style-type: none"> Release new models HU-M/T The - T model supports two-way audio for 4K analog cameras The Europe package support PPPoE function Support reset

Note: Get the firmware via searching specific models in Hikvision official websites (Global or EU).

02 Product How to

How to Use Wireless Bridge

Preparation

Device: Wireless Bridge, DS-3WF02C-5AC/O

Laptop.

Network Cable.

1. Activate

1.1 Search Device on SADP

Setup the password of the device.

SADP

Total number of online devices: 11

Unbind Export Refresh Filter

ID	Device Type	Status	Port	IPv4 Address	Enhanced SDK Service	Software Ver...	IPv4 Gate...	HTTP
001	DS-TP50-16E	Active	8000	10.9.114.50	N/A	V5.4.5build 2...	10.9.114.2...	80
002	iDS-2CD9396-BIS	Active	8000	10.9.114.146	N/A	V4.3.5build 2...	10.9.114.2...	80
003	iDS-7732NXI-M4/...	Active	8000	10.9.114.20	8443	V5.01.006bui...	10.9.114.2...	80
004	iDS-TSS300-C/04	Active	8000	10.9.114.30	N/A	V5.4.3build 2...	10.9.114.2...	80
005	DS-3E1105P-EI	Active	8000	10.9.114.229	N/A	V1.2.0build 2...	10.9.114.2...	N/A
006	DS-6916UDI(B)	Active	8000	10.9.114.111	N/A	V2.6.4 build ...	10.9.114.2...	80
007	DS-7616NXI-K2	Active	8000	10.9.114.222	N/A	V4.76.000bui...	10.9.114.2...	80
008	iDS-2CD403-BI	Active	8000	10.9.114.243	N/A	V4.5.0build 2...	10.9.114.2...	80
009	DS-3WF02C-5AC/O	Inactive	8000	192.168.1.36	N/A	V1.1.1 build ...	192.168.1...	443
010	DS-2CD3048G2-LIU	Active	8000	10.9.114.28	8443	V5.7.52build ...	10.9.114.2...	80
011	DS-2CD3686G2HT...	Active	8000	10.9.114.15	N/A	V5.7.52build ...	10.9.114.2...	80

Activate the Device

The device is not activated.

You can modify the network parameters after the device activation.

Activate Now

New Password:

Confirm Password:

Activate

1.2 Enable Dual-VCA on camera

And then setup the IP address by "Enable DHCP" or manual.

SADP

Total number of online devices: 11

Unbind Export Refresh Filter

ID	Device Type	Status	Port	IPv4 Address	Enhanced SDK Service	Software Ver...	IPv4 Gate...	HTTP
001	DS-TP50-16E	Active	8000	10.9.114.50	N/A	V5.4.5build 2...	10.9.114.2...	80
002	iDS-2CD9396-BIS	Active	8000	10.9.114.146	N/A	V4.3.5build 2...	10.9.114.2...	80
003	iDS-7732NXI-M4/...	Active	8000	10.9.114.20	8443	V5.01.006bui...	10.9.114.2...	80
004	iDS-TSS300-C/04	Active	8000	10.9.114.30	N/A	V5.4.3build 2...	10.9.114.2...	80
005	DS-3E1105P-EI	Active	8000	10.9.114.229	N/A	V1.2.0build 2...	10.9.114.2...	N/A
006	DS-6916UDI(B)	Active	8000	10.9.114.111	N/A	V2.6.4 build ...	10.9.114.2...	80
007	DS-7616NXI-K2	Active	8000	10.9.114.222	N/A	V4.76.000bui...	10.9.114.2...	80
008	iDS-2CD403-BI	Active	8000	10.9.114.243	N/A	V4.5.0build 2...	10.9.114.2...	80
009	DS-3WF02C-5AC/O	Active	8000	192.168.1.36	N/A	V1.1.1 build ...	192.168.1...	443
010	DS-2CD3048G2-LIU	Active	8000	10.9.114.28	8443	V5.7.52build ...	10.9.114.2...	80
011	DS-2CD3686G2HT...	Active	8000	10.9.114.15	N/A	V5.7.52build ...	10.9.114.2...	80

Modify Network Parameters

☒ Enable DHCP

☐ Enable Hik-Connect

Device Serial No.: DS-3WF02C-5AC/O0020231

IP Address: 192.168.1.36

Port: 8000

Subnet Mask: 255.255.255.0

Gateway: 192.168.1.254

IPv6 Address: ::

IPv6 Gateway: ::

IPv6 Prefix Length: 0

HTTP Port: 443

Security Verification

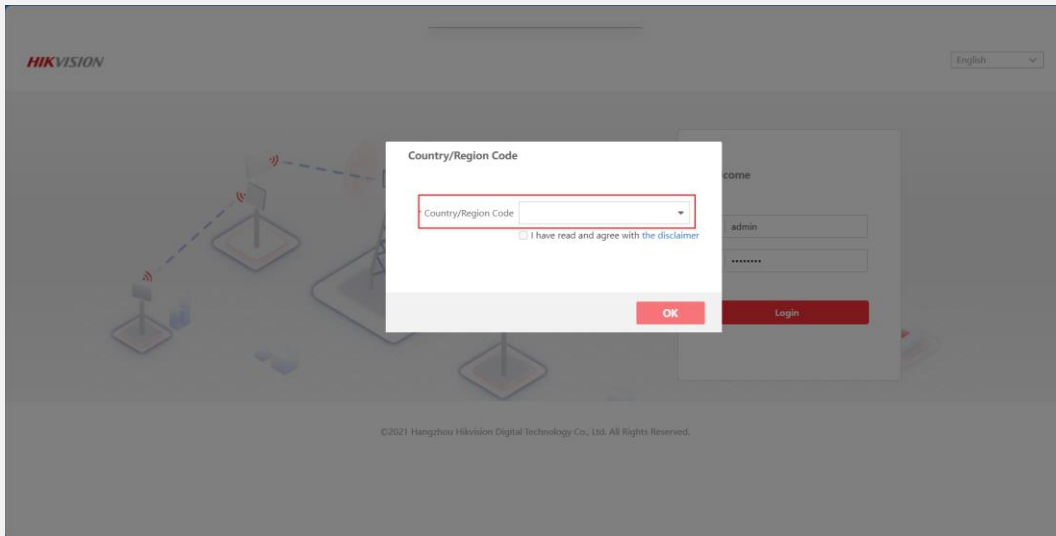
Administrator Password:

Modify

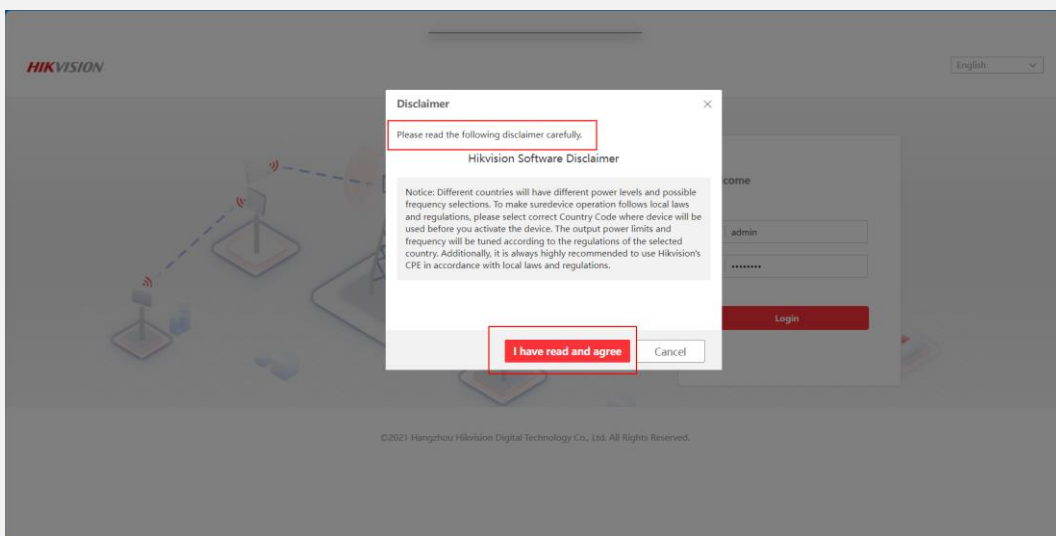
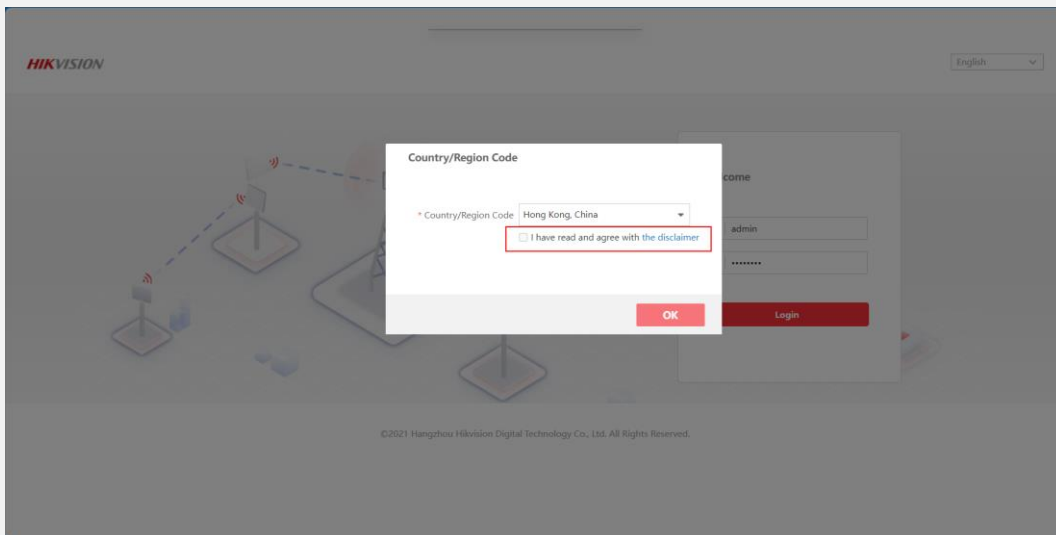
Forgot Password

02 Product How to

How to Use Wireless Bridge

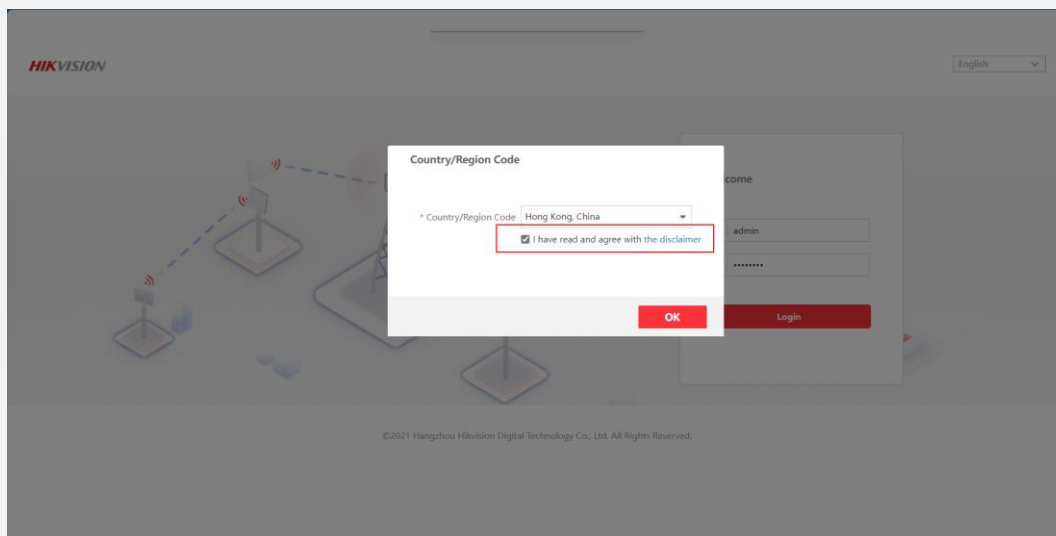


Read and check the disclaimer.



02 Product How to

How to Use Wireless Bridge

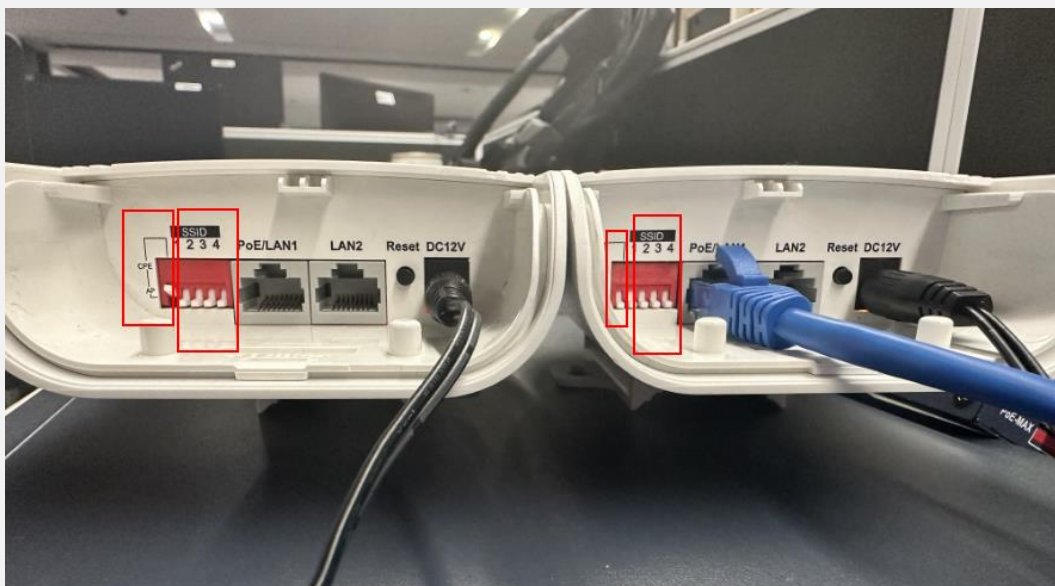


After click the “OK”, the device has been activated.

2. Configuration

2.1 SSID

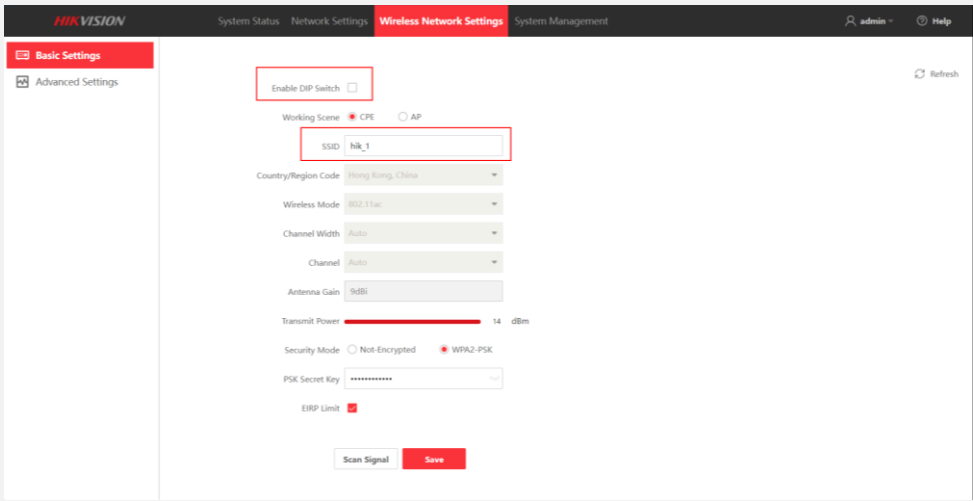
Set the DIP as the SSID of wireless network, and the SSID between the two bridges must be the same. And the Working Scene of one bridge is AP (TX module), the other is CPE (RX module).



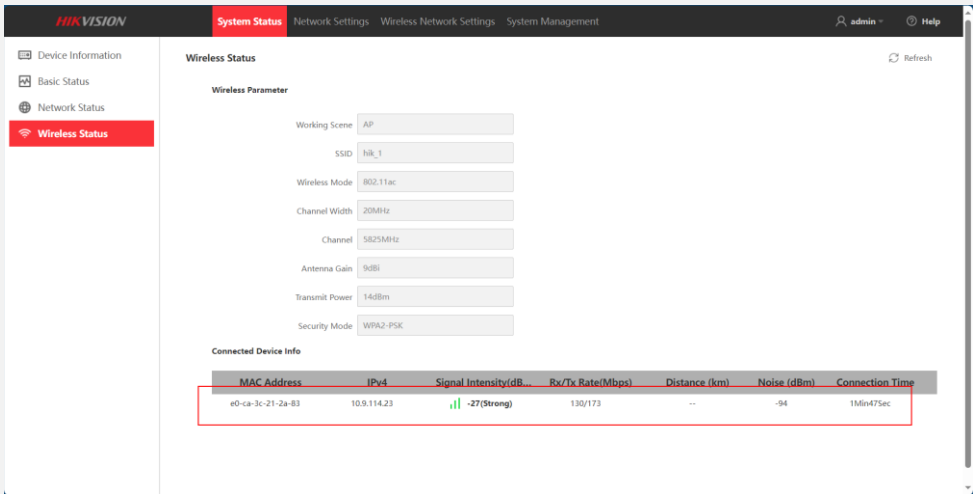
Besides this way, it supports to set the SSID by manual. Quit the Enable DIP Switch, and then input the name of SSID.

02 Product How to

How to Use Wireless Bridge

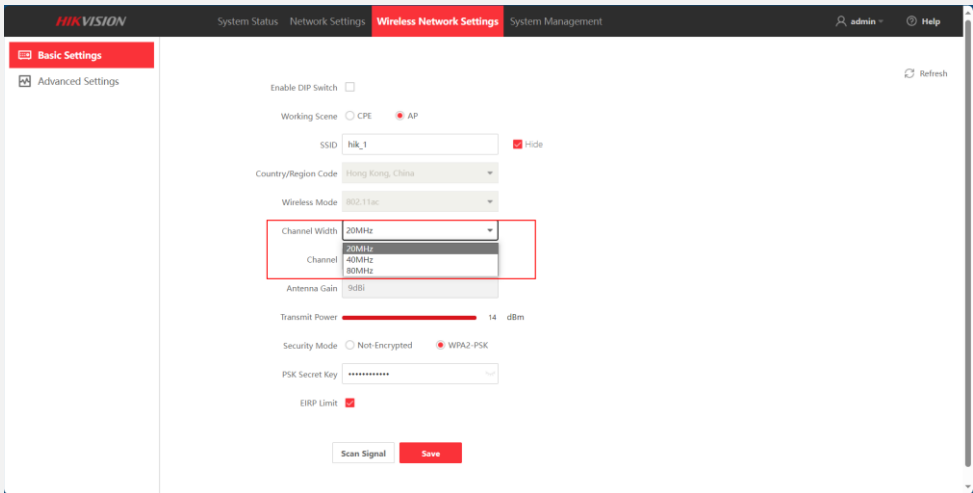


The wireless bridges have been connected and paired.



2.2 Channel Width

This model Wireless Bridge supports the three type of channel width, includes 20MHz, 40MHz, 80MHz.

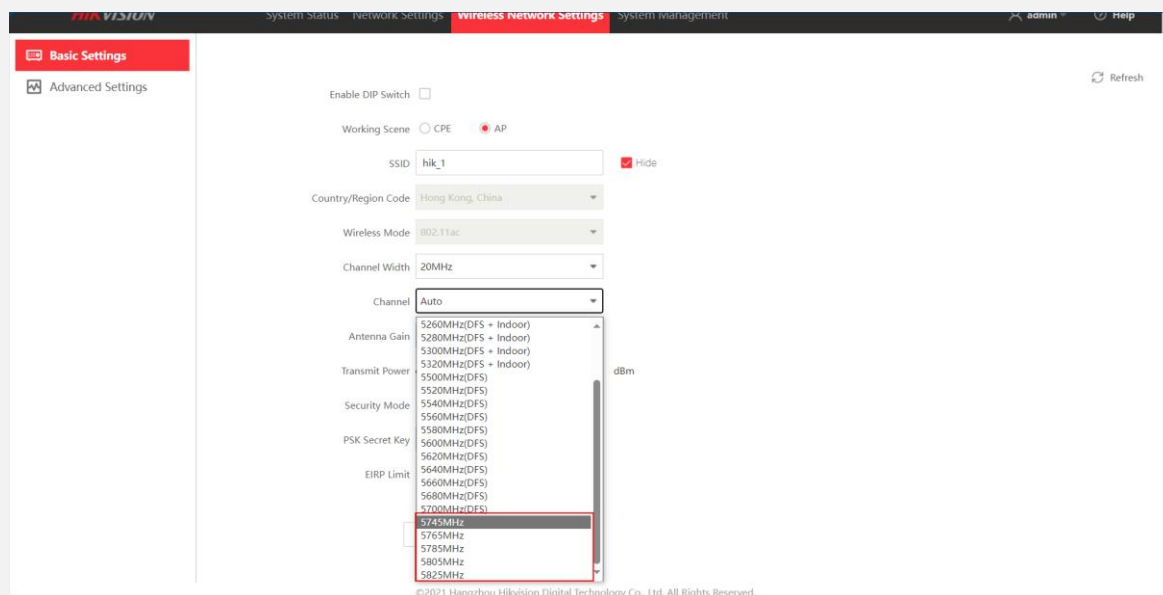


02 Product How to

How to Use Wireless Bridge

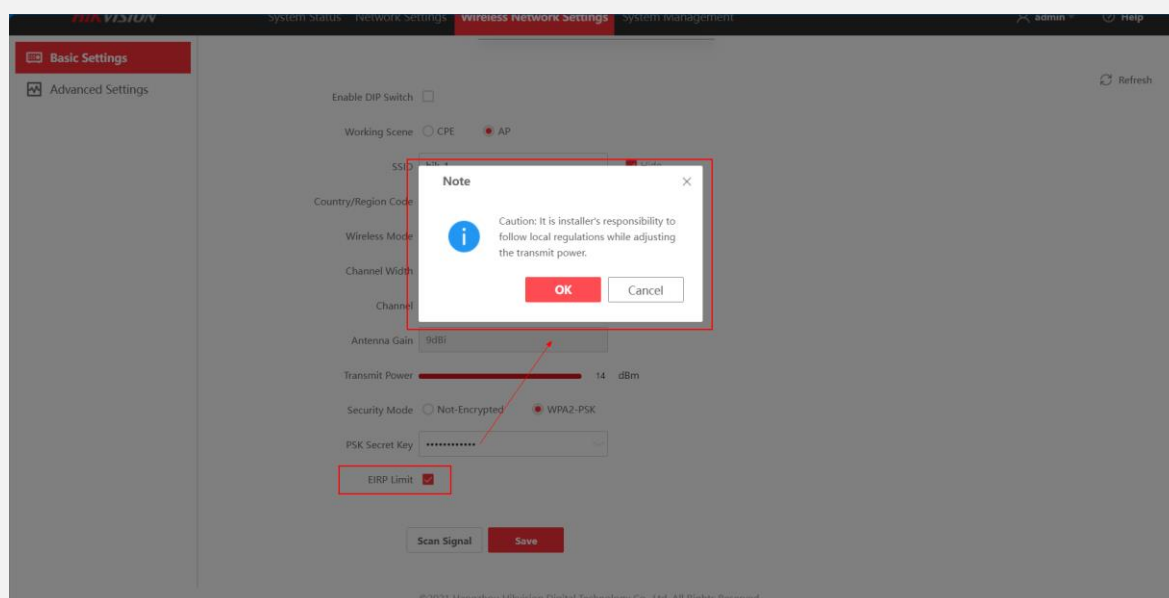
2.3 Channel

Recommend to select the Non-DFS channel at the outdoor.



2.4 Transmit Power

According to the environment, wireless bridge supports to change the transmit power, but this parameter is 14dBm by default, if you want to change it, please quit the "EIRP Limit" first. Please follow the local regulations while adjusting the transmit power.



02 Product How to

How to Use Wireless Bridge

The screenshot shows the 'Wireless Network Settings' page in the HIKVISION web interface. The 'Basic Settings' tab is selected. The settings are as follows:

- Enable DIP Switch: ☐
- Working Scene: ☐ CPE ☒ AP
- SSID: hik_1 ☒ Hide
- Country/Region Code: Hong Kong, China
- Wireless Mode: 802.11ac
- Channel Width: 20MHz
- Channel: Auto
- Transmit Power: 15 dBm (highlighted with a red box)
- Security Mode: ☐ Not-Encrypted ☒ WPA2-PSK
- PSK Secret Key: [masked]
- EIRP Limit: ☐

Buttons at the bottom: Scan Signal, Save.

2.5 Router Mode

If you want to make the wireless bridge works in the router mode, please turn off the TDMA first.

The screenshot shows the 'Wireless Network Settings' page in the HIKVISION web interface. The 'Advanced Settings' tab is selected. The settings are as follows:

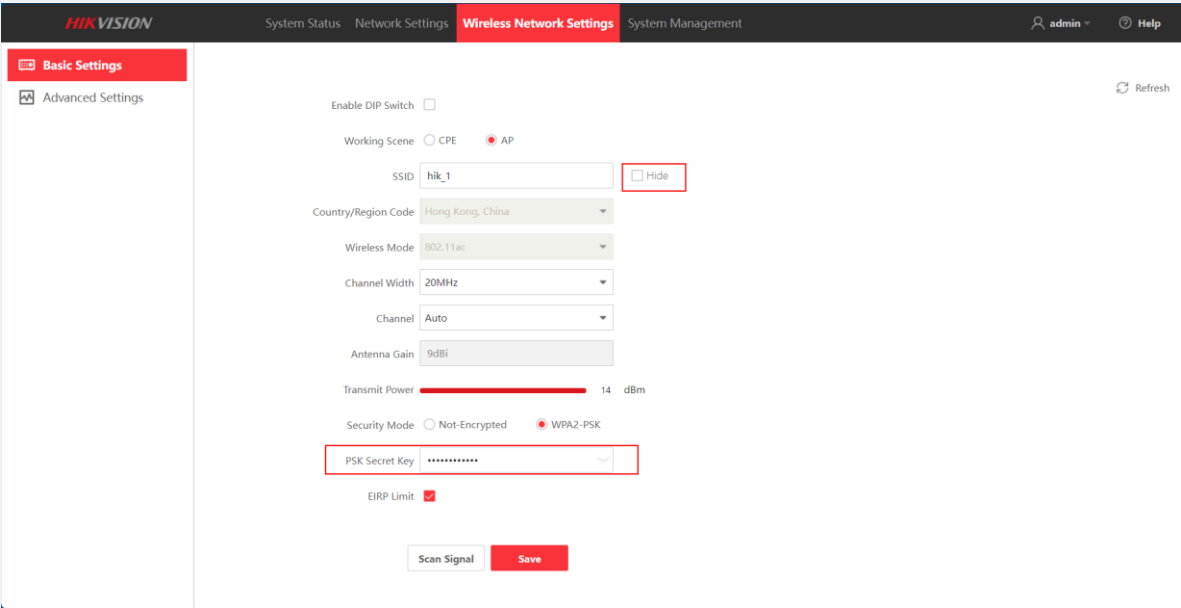
- TDMA: ☐ (highlighted with a red box)
- Auto Frequency Hopping: ☒

2.6 Hide SSID

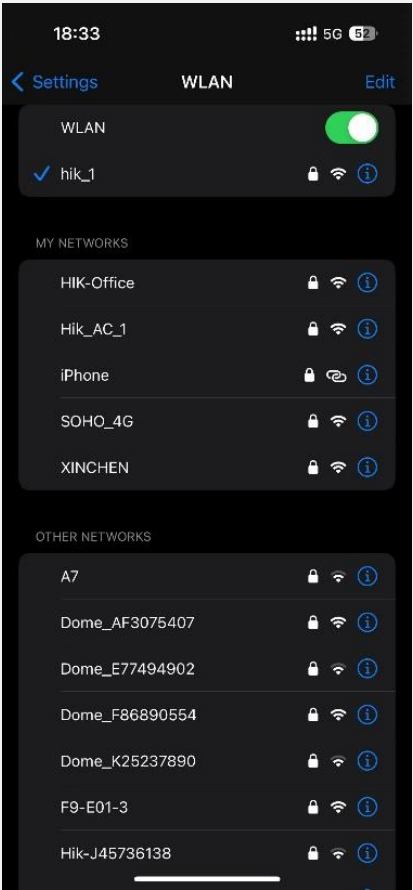
Quit the "SSID Hide", and set the PSK Secret Key which is the password of Wi-Fi.

02 Product How to

How to Use Wireless Bridge



Access to the Wi-Fi.



03 Product Q&A

Question 1 - When does M series NVR support PTRZ camera and control them?

Answer:

Since v5.03.020_240904 version.

Question 2 - For analog camera, will the FOV narrow when adjusting the resolution from high to low?

Answer:

Yes, the FOV will be narrow when adjusting the resolution from high to low.

Question 3 - Which kind of alarms can EUI NVR receive from Hikvision switch?

Answer:

Since v4.75.000_build230620, EUI NVR support to add Hikvision switch via HIKVISION protocol, and support to receive two kind of alarms: Switch Port Status Upload, POE Power Exceeded Limit.

Question 4 - Can we improve the distance if we added a POC box between analog camera and DVR?

Answer:

No, it can't. It can only extend the distance between the analog camera to POC box, it doesn't has long distance design between POC Box to DVR, default 1m distance.

Question 5 - Will the power consumption be higher when analog camera turns on the supplement light?

Answer:

No, the power consumption spec in datasheet is already the max value.

Question 6 - What's the maximum operating power of AT and AF analog cameras?

Answer:

The maximum operating power of AT and AF are 10 W and 6 W respectively.

Question 7 - Can we view the IPC channel when connecting a monitor via CVBS video out interface on DVR?

Answer:

No support.

Question 8 - Network Service - HTTPS(S) - HSTS?

Answer:

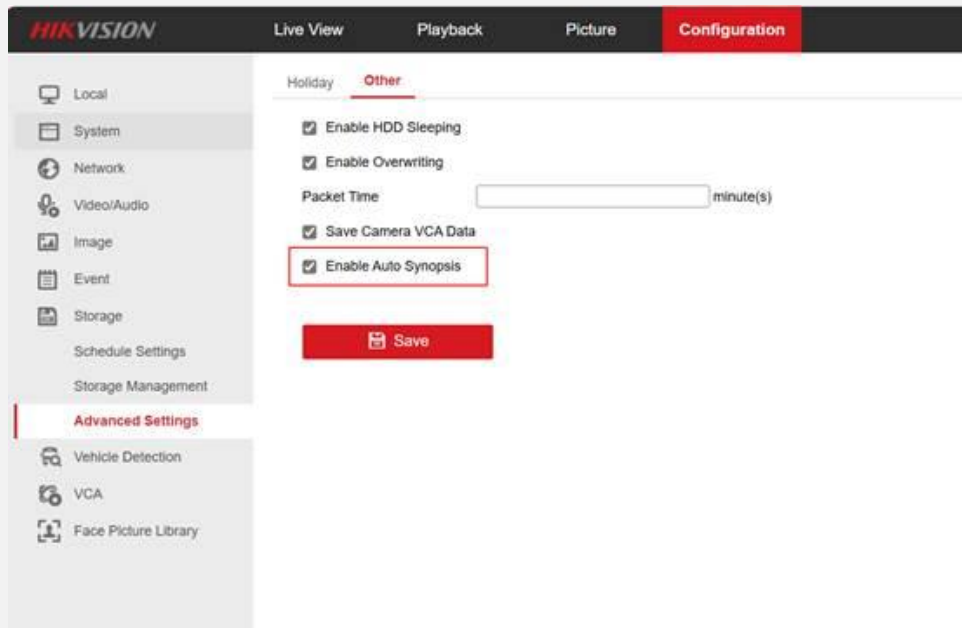
To detect http packet attacks and prevent the attack source from attacking the NVR through http packet requests.

03 Product Q&A

Question 9 - What is Auto Synopsis Function?

Answer:

EUI function, supported since version 4.82 In order to achieve the smooth dragging effect of HC APP, a copy of the video(Frame extraction) is saved on the NVR. After Enable, NVR will save video(Frame extraction one), and this video will not be deleted even the function is disabled.



Question 10 - NVR version that support Human/Vehicle classification on HC teams?

Answer:

EUI 4.74 and above. GUI 5.03.020 and above.

Question 11 - RTSP streaming URL of channel zero?

Answer:

for example: `rtsp://admin:zaq1xsw2@10.9.96.111:554/Streaming/channels/001/av stream`.

Question 12 - When connect a POS machine with NVR via RS-232 connection mode, if there is no RS-232 port on the back panel. can use a serial port card to forward the connection?

Answer:

Yes, a serial port card is ok.

04 Survey

An informative and inspiring newsletter needs your continual contributions and feedback, please feel free to submit your comments in this survey by clicking the link or scanning QR code: <https://www.surveymonkey.com/r/8GFLXDZ>

It will take you 2 minutes to complete. Thanks for your time in advance.

Hikvision Europe Monthly External Technical Newsletter Survey

