

# *HIKVISION EUROPE*

## Monthly External Technical Newsletter

---

### CONTENTS

New Firmware / Software Release  
Product How to  
Product Q&A

August 2025

# Main Contents

## 01 New Firmware / Software Release

- Channel CCTV
- AX Pro V1.3.0
- Project IP

## 02 Product How to

- For AX Pro, how to enable Late to Disarm, Auto Arm and Auto Disarm in HC
- How to use HPP Share B Mode in Personal
- How to set up a one-touch button to unlock an Android indoor station
- How To Call Master Station KM9503 from KV8 series Villa Door Station Directly

## 03 Product Q&A

- I have a Controller DS-K2702WX-E1 and 2 Readers, Is it possible to make one reader as a Exit Reader and another as a Entrance reader?
- .....

*Editor-in-Chief: John Wu | Editor: David Jin | Executive Editor: Effie Ding*



### **Contributions and feedback**

An informative and inspiring newsletter needs your continual contributions and feedback. Please feel free to submit your comments to [product.eu@hikvision.com](mailto:product.eu@hikvision.com).

# 01 New Firmware / Software Release

## Channel CCTV

NVR	DS-9632NI-M8 DS-7608NXI-I2/S (E)	V5.04.066_build250620	<ul style="list-style-type: none"> <li>• Support to add 4G &amp; non-4G Hikvision IP camera (non-solar models) whose support ISUP5.0 protocol;</li> <li>• Support configure arming/disarming schedules on HC, auto arm/silent arm/disarm each channel at specific time (hour:minute) ;</li> <li>• Support to add high frame rate IP camera via Hikvision protocol;</li> <li>• Support to add multi-channel IP cameras via POE, you can add the other channels under Video Device menu;</li> <li>• Support to attach 3 images for perimeter protection when choosing to send alarm email.</li> </ul>
-----	-------------------------------------	-----------------------	---

Note: Get the firmware via searching specific models in Hikvision official websites (Global or EU).

## AX Pro V1.3.0

Firmware V1.3.0 of AX Pro has been released.

### Main Updates

- Upgrade ISUP and ISAPI protocols to OTAP protocol
- Optimize Message Push Notification
- AX PRO 1.3.0 supports upload device log to Cloud
- Device Web Interface Optimization
- Device Log Optimization
- Faster App Response: Enjoy smoother performance even on unstable networks
- Reduced Mobile Data Usage: More cost-effective operation by using less mobile data.
- Operation & Configuration Wizard: Streamline your setup and operation with our new, easy-to-use wizard on the app.

### Note:

AX Pro firmware 1.2.9 and earlier versions are not compatible with firmware V1.3.0 Build 250430, please do not upgrade for old firmware version (1.2.9 and earlier versions).

For 1.2.9 and earlier versions, you can upgrade to V1.3.1 later, and it will be released around September in 2025.

# 01 New Firmware / Software Release

## Project IP

NVR	iDS-9632NXI-M8/X	V5.04.050 build250124	<ul style="list-style-type: none"> <li>• Support Privacy Protection function for 7 &amp; 8 series mosaic cameras;</li> <li>• OTAP supports transparent transmission of ISAPI subscription</li> <li>• Support to configure the White Light Mode between Solid and Flashing for thermal cameras;</li> <li>• Support to enable and configure the alarm receiving service port for IoT devices;</li> <li>• Support Stranger Detection function; --- (NXI-I/NXI-M)</li> <li>• Support to do Motion Detection for Access Control devices;</li> <li>• Support to do two-way audio via IP speaker on Hik-Connect</li> <li>• Support to do picture file search on web;</li> <li>• Support to do POS event search on web</li> <li>• Support to draw decagonal rule for perimeter protection function when using AI by camera, unify the rules between the front and back end devices;</li> <li>• Support to connect the IP Speaker via random POE port on NVR</li> </ul>
NVR	DS-9632NI-M8	V5.04.066_250620	<ul style="list-style-type: none"> <li>• Support to add Hikvision IP camera (non-solar models) via ISUP5.0 protocol</li> <li>• Support configure arming/disarming schedules on HC, auto arm/silent arm/disarm each channel at specific time (hour:minute) ;</li> <li>• Support to add high frame rate IP camera via Hikvision protocol;</li> <li>• Support to add multi-channel IP cameras via POE, you can add the other channels under Video Device menu;</li> <li>• Support to attach 3 images for perimeter protection when choosing to send alarm email;</li> <li>• Fix known issues.</li> </ul>
IPC	iDS-2CD7A46G2/V	V5.8.0_250624	<ul style="list-style-type: none"> <li>• Optimization of perimeter large model market testing issues, optimization of supplemental lighting strategy.</li> <li>• The resolution for the image segmentation classification has been upgraded from 200w to 400w.</li> <li>• Algorithm update: Improving the classification performance.</li> <li>• Perimeter events support HUMAN/VEHICLE target classification when alarms are uploaded via ONVIF.</li> </ul>

Note: Get the firmware via searching specific models in Hikvision official websites (Global or EU).

## 02 Product How to

For AX Pro, how to enable Late to Disarm, Auto Arm and Auto Disarm in HC (under transfer mode)

### Issue Description

For AX Pro V1.3.0, HPP adds AX Pro host and shares AX Pro with HC users through transfer mode. At this time, although HC users have all permissions for all devices, many permissions are closed by default, such as: Late to Disarm, Auto Arm and Auto Disarm. How to enable them for HC?

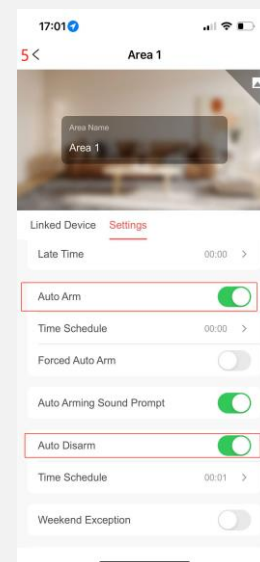
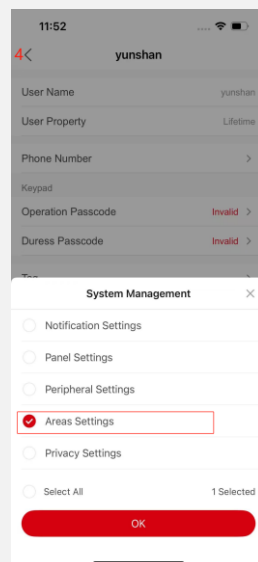
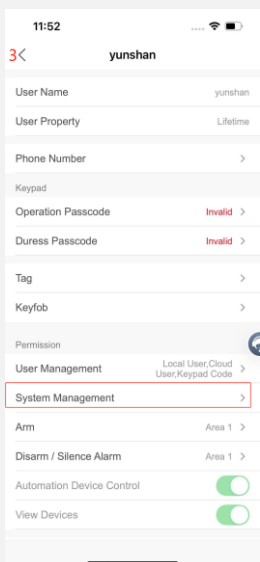
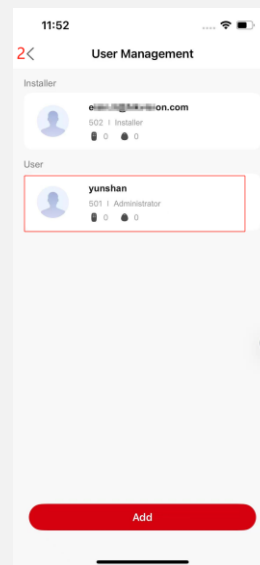
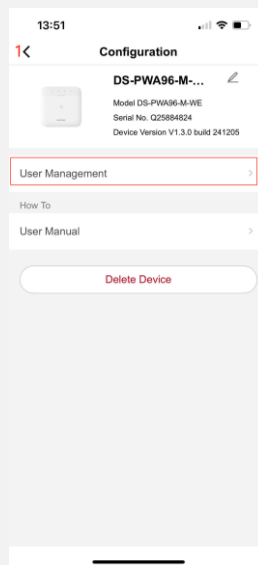
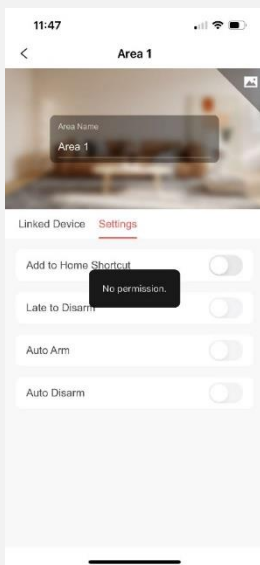
Step 1: Open Configuration page of AX Pro in HC and click User Management

Step 2: Click HC user (administrator)

Step 3: Click System Management

Step 4: Choose "Area Settings" and click "Ok"

Step 5: Now, Late to Disarm, Auto Arm and Auto Disarm in Area Settings could be enabled



## 02 Product How to

### How to use HPP Share B Mode in Personal

#### Preparation

1. AX PRO V1.2.9 build 240621
2. Hik-Partner Pro App
3. Hik-Connect App

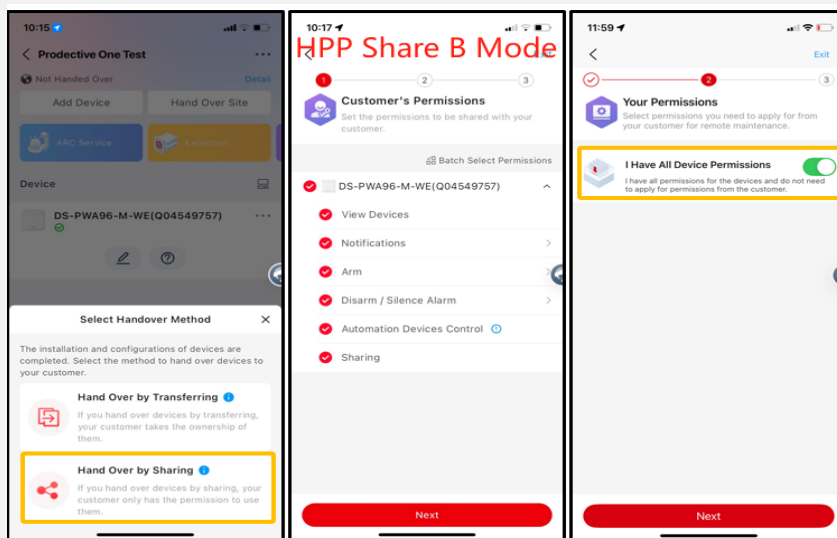
#### Scene Introduction

In a company, they install Hikvision AX Pro or Hybrid Pro Series Alarm Control Panel and End users only care about the basic functions of alarm devices, and the maintenance and configuration rights of the device are handled to the installer or ARC.

In this kind of Device usage scenario, we recommend that installers use HPP Share B mode to manage customers' equipment.

#### What is HPP Share B Mode in Personal?

HPP Share B Mode: Installer use HPP create a new site and add AX Pro, then Hand over site by Share Mode & enable I have All Device Permission to HC end user, like the following picture:

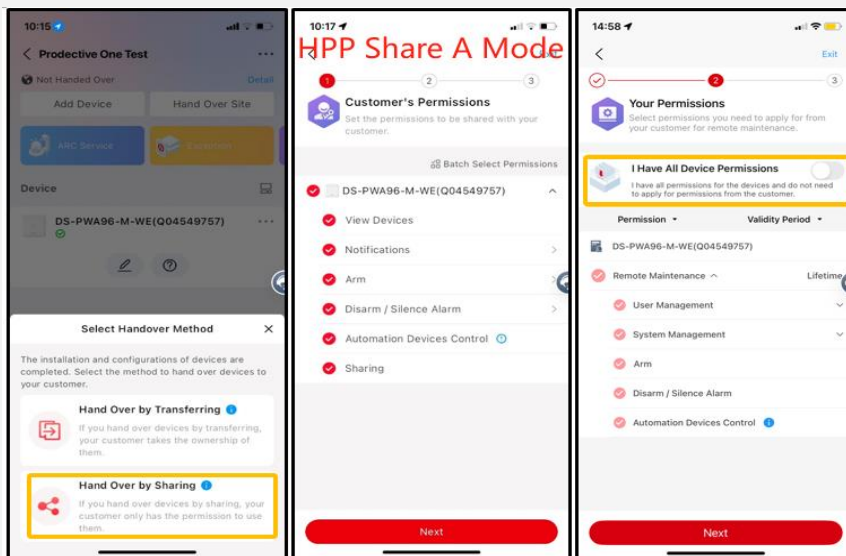


The corresponding disable I have All Device Permission is the HPP Share A mode.

HPP Share A Mode: Installer use HPP create a new site and add AX Pro, then Hand over site by Share Mode & disable I have All Device Permission to HC end user, like the following picture:

# 02 Product How to

## How to use HPP Share B Mode in Personal



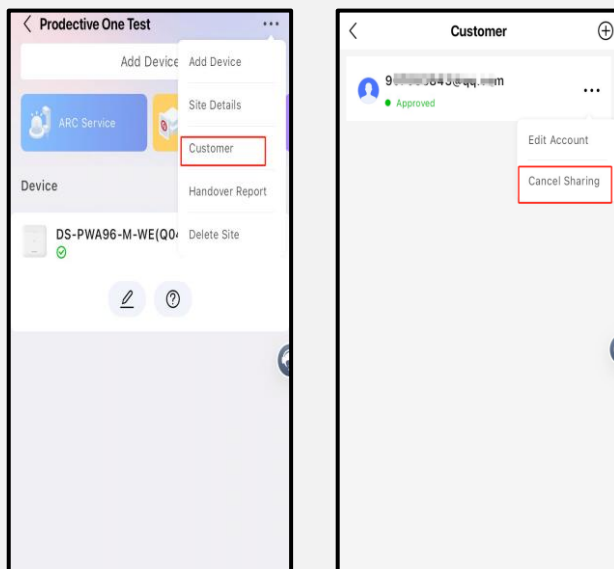
### How does it work?

HPP Share B Mode, it is a mode specially designed for installers and ARC services. This mode can help installers and ARC maintain equipment more conveniently, and solve issues remotely and easily, for example: end user wants to change or delete account transfer, configuration etc., it helps to work more efficient.

For example: In a company installer gave the panel Operation Permissions to a HC1 account, this person (HC1) has leaving the company and installer need to remove the panel from HC1 account and gave new person HC2 Operation Permissions, How to do it?

If you use HPP Share B Mode, you just need go to your HPP account do this operation:

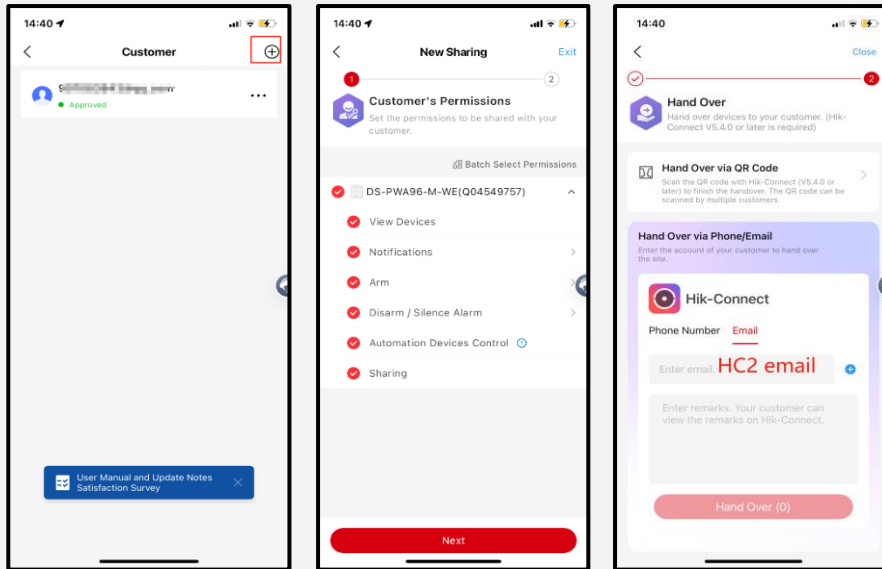
HPP Application --- Customer --- choose the HC1 email --- "..." --- Cancel Sharing, then AX Pro will be delete from HC1 Account.



## 02 Product How to

### How to use HPP Share B Mode in Personal

HPP Application --- Customer --- "+" --- choose AX Pro device --- Give All Permission ---HC2 email information --- Hand over --- when HC2 agree --- AX Pro will be added in HC2 account.



## 02 Product How to

### How to set up a one-touch button to unlock an Android indoor station

#### Preparation

Indoor station (Using DS-KH9310-WTE1(B) V2.2.86\_250325 or above as example).

Users can control the output of a single door without having an active call or viewing the picture in real time, with just one touch on the key icon.

#### Settings

Enter Settings -> Performance -> Press to Unlock menu.



Enable Press to Unlock option and select Lock 1 or Lock 2.



**Note:** Only one lock can be selected.

# 02 Product How to

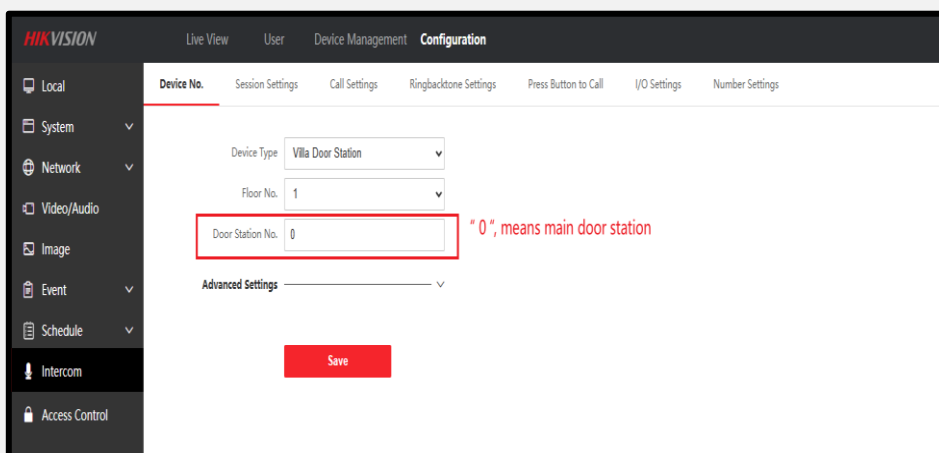
## How To Call Master Station KM9503 from KV8 series Villa Door Station Directly

### Preparation

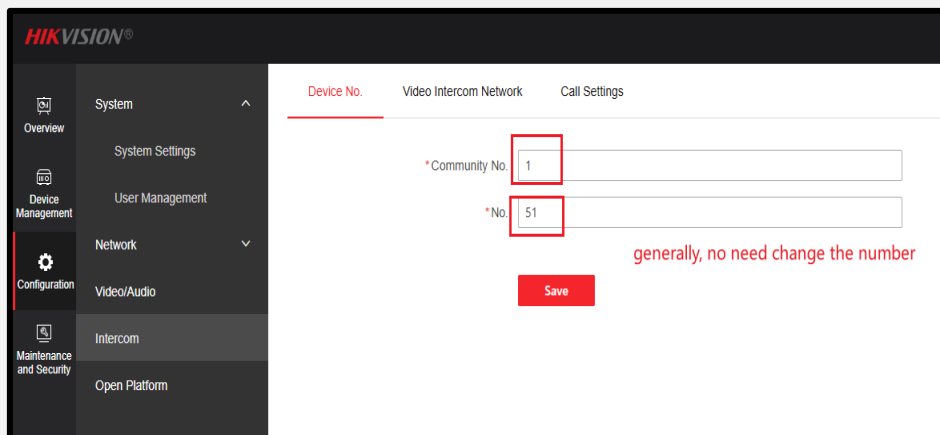
1. Villa Door Station and Master Station, they are in the same local network
2. PC in the same local network, you can login web interface of Villa Door Station and Master Station successfully

### Step 1. Login device WEB browser on PC

- Check device firmware version (Villa door station: V2.2.78 build 241012, Master station: V1.2.0 Build 240614)
- Familiar with device web interface for different core functions (IP address setting, Upgrade firmware, Restore all setting, intercom setting, registration password, etc.)
- Device number setting



Villa Door Station DS-KV8 series



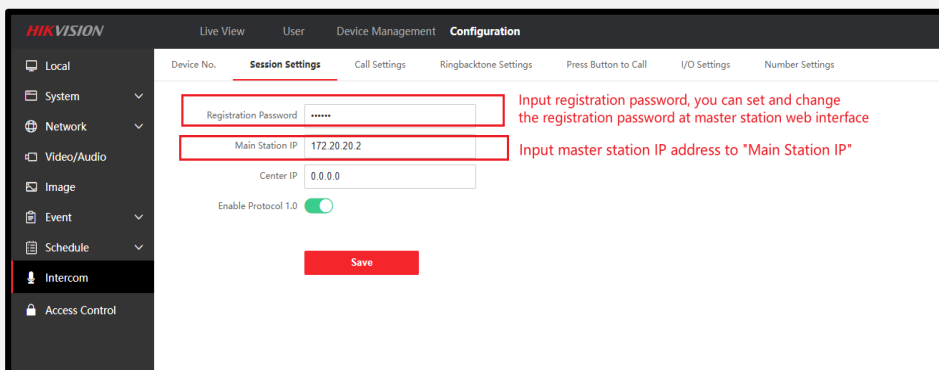
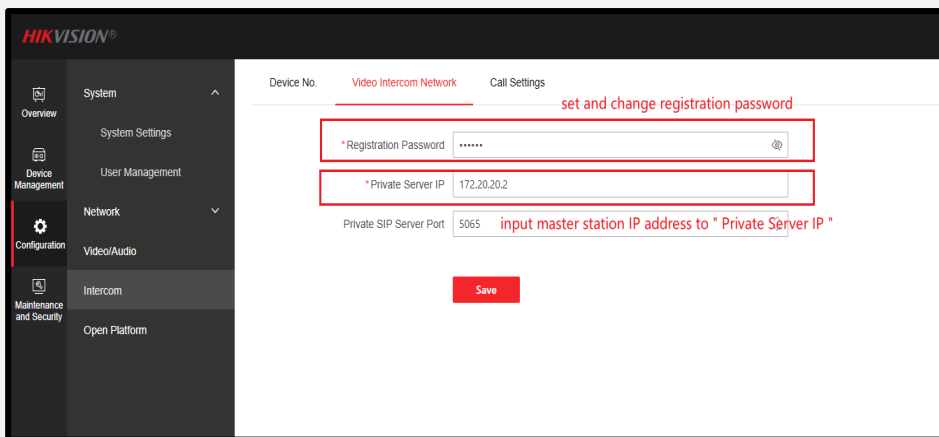
Master Station DS-KM9503 series

## 02 Product How to

### How To Call Master Station KM9503 from KV8 series Villa Door Station Directly

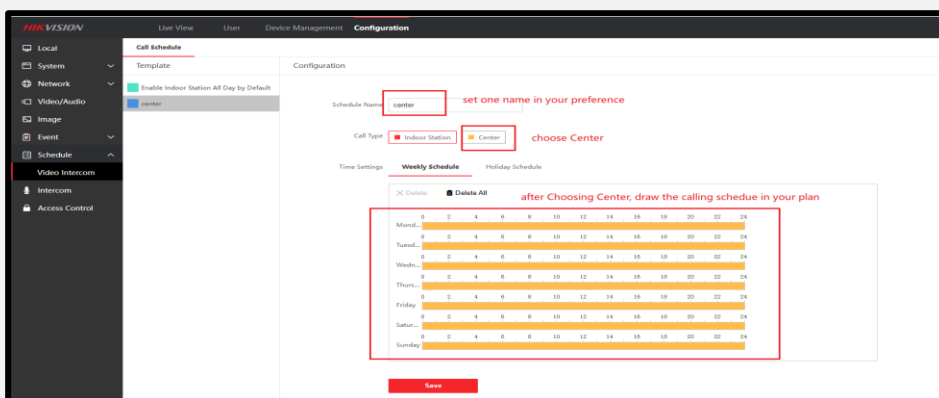
#### Step 2. Villa Door Station register to Master Station

- Login master station web interface, set and change registration password, input the master station IP address, save
- Login villa door station web interface, input the master station IP address, input master station registration password, save



#### Step 3. Call Schedule Setting on Villa Door Station Web Interface

- Login villa door station web interface, set the “center” calling schedule in your way

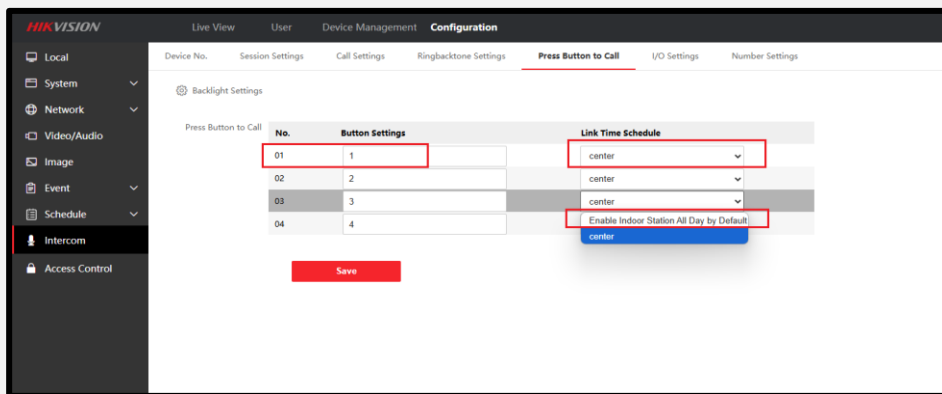


## 02 Product How to

### How To Call Master Station KM9503 from KV8 series Villa Door Station Directly

#### Step 4. Select “calling schedule” for villa door station different buttons

- Login villa door station web interface, select the “center” calling schedule, then press the selected button, villa door station will call master station directly
- Login villa door station web interface, select the “Enable Indoor Station All Day by Default” calling schedule, then press the selected button, villa door station will call indoor station directly



## 03 Product Q&A

### **Question 1 - I have a Controller DS-K2702WX-E1 and 2 Readers, Is it possible to make one reader as a Exit Reader and another as a Entrance reader?**

Answer:

The PIN code apply mode menu on web exist after the firmware version above 1.8.2.

Yes, it is possible. If you use 485 protocol, just change the dial code on the back of the card reader. After changing the dial code, you need to restart to take effect; if you use Wiegand, just change an interface. Just unplug the card reader and switch to another interface

### **Question 2 - For Alarm Control Panel or detectors, they upgrade the firmware successfully through the website, but the HC or Website still shows the old version firmware information, what can we do?**

Answer:

After upgrading the firmware, the browser or HC has not cleared the cache, so sometimes it still shows the old version. Please clear the browser cache and log in again or log in with another browser, it should be work.

For HC, please try to log in HC the account again, it should be work.

### **Question 3 - Why HPP health Check receives more frequent notifications from AX Pro after it upgrade to V1.3.0?**

Answer:

In V1.2.9, the data source of HPP comes from the inspection of AX Pro every 1 hour, HPP checks AX Pro to see if there is any abnormality

In V1.3.0, the data source of HPP is the active reporting of AX Pro. When the AX Pro status changes or is abnormal, it will be reported to HPP immediately. The purpose of this is to enable HPP health check function to be updated more real-time and provide a better user experience.

Because the HPP data source method has been changed, the HPP Health Check receives more frequent notifications.

### **Question 4 - DS-K1T809MWX can connect access controller?**

Answer:

Yes, DS-K1T809MWX support Wiegand output. It can connect access controller through Wiegand output.

## 03 Product Q&A

### **Question 5 - Can I use the static QR code on DS-KV9503-WBE1 to open door?**

Answer:

No. Static QR code could be used by other unauthorized persons easily, which bring risk for door access management. For security reasons, HQ stopped the static QR code recognition on the model.

### **Question 6 - What is the AP hotspot wifi password after you activate the K1T809 terminal locally?**

Answer:

For example:

local activation code is: 88889999. The terminal is activated.

Then reboot the terminal.

Mobile Phone connect the hotspot of the terminal: name of the Hotspot: AP\_Serial No.

Password of the Hotspot: AP-88889999.

Mobile Phone Web browser login the terminal web interface: Name: Admin Password: 88889999 (it is highly recommended that you change password and set strong password on mobile phone web page, then the terminal will have strong password protection).

## 04 Survey

An informative and inspiring newsletter needs your continual contributions and feedback, please feel free to submit your comments in this survey by clicking the link or scanning QR code: <https://www.surveymonkey.com/r/8GFLXDZ>

It will take you 2 minutes to complete. Thanks for your time in advance.

### Hikvision Europe Monthly External Technical Newsletter Survey

