

HIKVISION EUROPE

Monthly External Technical Newsletter

CONTENTS

New Firmware / Software Release
Product How to
Product Q&A

July 2025

Main Contents

01 New Firmware / Software Release

- Channel CCTV

02 Product How to

- How to Use Acuseek NVR

03 Product Q&A

- The camera is not in Acusearch-supported mode, can the NVR side switch it?
- Does Acuseek support searching for targets by person name?
- HCP support Acuseek?
-

Editor-in-Chief: John Wu | Editor: David Jin | Executive Editor: Effie Ding



Contributions and feedback

An informative and inspiring newsletter needs your continual contributions and feedback. Please feel free to submit your comments to product.eu@hikvision.com.

01 New Firmware / Software Release

Channel CCTV

NVR	DS-7608NXI-I2/VPro DS-7716NXI-I4/VPro	V5.05.335 build2500617	<ul style="list-style-type: none"> Fix known defects, and optimize product performance. Optimize AcuSeek in multiple Europe languages: German, French, Italian, Spanish, Portuguese, Polish, English
NVR	DS-7732NXI-I4/S(E)	V5.04.066_250620	<ul style="list-style-type: none"> Support to add Hikvision IP camera (non-solar models) via ISUP5.0 protocol Support configure arming/disarming schedules on HC, auto arm/silent arm/disarm each channel at specific time (hour:minute) ; Support to add high frame rate IP camera via Hikvision protocol; Support to add multi-channel IP cameras via POE, you can add the other channels under Video Device menu; Support to attach 3 images for perimeter protection when choosing to send alarm email; Fix known issues.
NVR	DS-7716NI-M4	V5.04.066_250620	<ul style="list-style-type: none"> Support to add multi-channel IP cameras via POE, you can add the other channels under Video Device menu; Support to attach 3 images for perimeter protection when choosing to send alarm email; Fix known issues.
NVR	DS-7616NXI-K1(E)	V4.84.016build250621	<ul style="list-style-type: none"> Fix known issues.
NVR	DS-7608NI-K2(D) DS-7604NXI-K1(D)	V4.84.025build250516	<ul style="list-style-type: none"> Fix known issues.
DVR	HW-HWD-6104MH/T HL-DVR-204Q-M1/T iDS-7108HQHI-M1/T	V4.83.801 build250512	<ul style="list-style-type: none"> Fix known issues.
DVR	DS-E04HGHI-XE iDS-E08HQHI-XB DS-E16HGHI-XB	V4.75.030 build 250508	<ul style="list-style-type: none"> Added support for BICS6 SSDs with 512GB/1TB/2TB capacity
IPC	DS-2CD2387G3-LI(2U)Y DS-2CD2667G3-LIZSY	V5.8.10 250605	<ul style="list-style-type: none"> NVR Compatibility Issues Fixed: <ul style="list-style-type: none"> Resolved the issue where NVR could not individually enable audio for the main stream or sub-stream. Fixed the issue of being unable to adjust the volume of audible alarm output on the NVR side. HC Compatibility Issue Fixed for Inability to Retrieve and Adjust Illumination Light Brightness.

Note: Get the firmware via searching specific models in Hikvision official websites (Global or EU).

02 Product How to

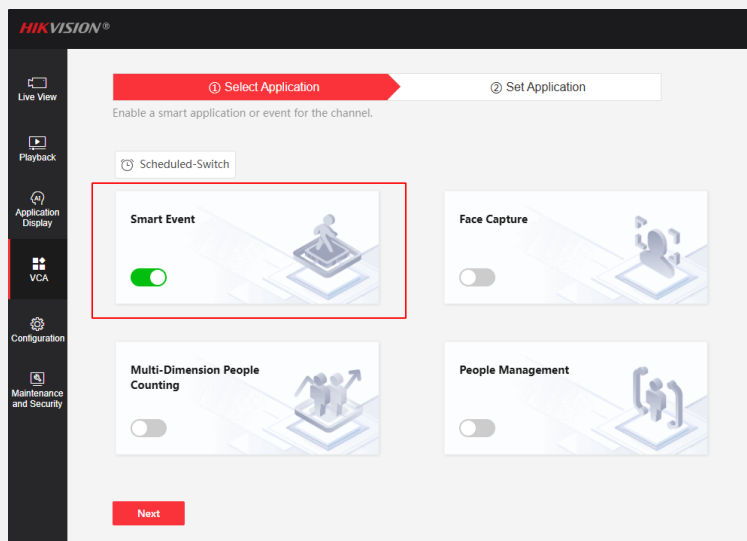
How to Use Acuseek NVR

1. GUI

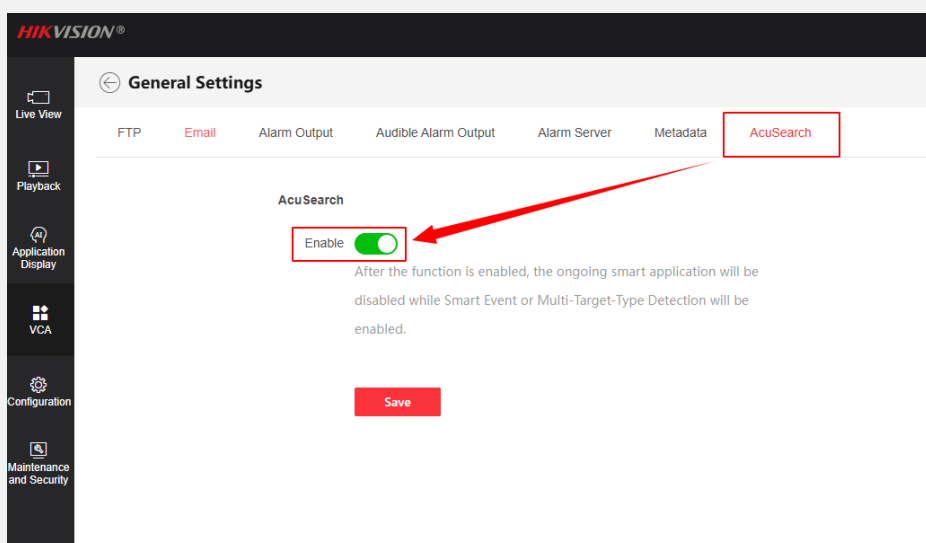
1.1 Log in the web of camera and switch to the corresponding mode:

Log in to the web of the device and click “VCA” – “Select Application”– “Smart(Multi-Target-Type Detection)” as shown in the following figure.

then click “Save”.



After the camera restarts. click “VCA” – “Set Application” – “General Settings” – “Acusearch” as shown in the following figure. Click “Enable” and “Save”.



02 Product How to

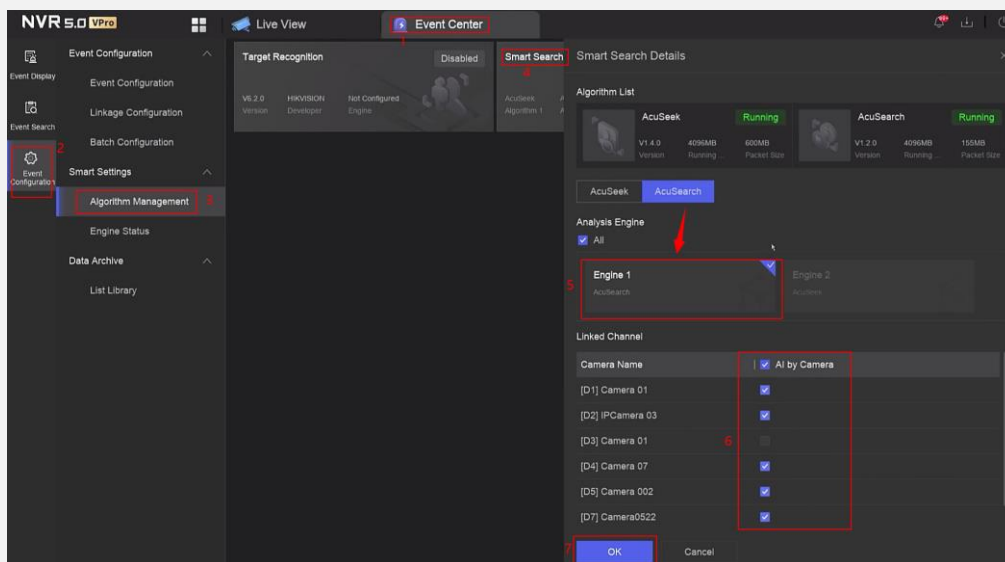
How to Use Acuseek NVR

1.2 Setting

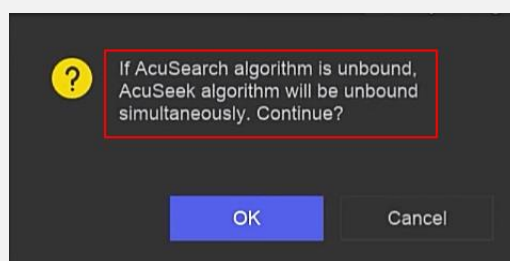
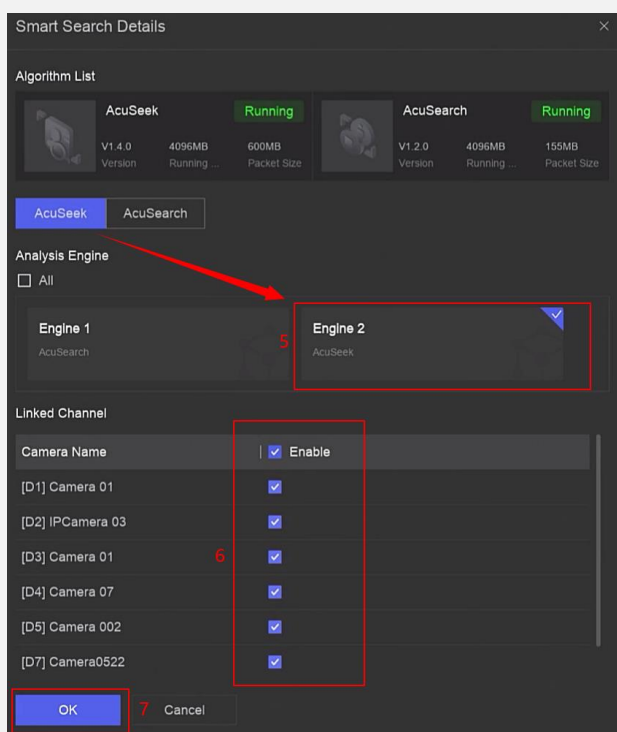
Click "Event Center" – "Event Configuration" – "Smart Settings" –

"Algorithm Management" – "Smart Search" as shown in the following figure:

Engine 1 switches to Acusearch algorithm. then AI by camera and click "OK"



Engine 2 switches to Acuseek algorithm. then AI by camera and click "OK"



Note

The AcuSeek algorithm should be run simultaneously with the AcuSearch algorithm. The AcuSeek function will be unavailable if the AcuSearch algorithm is switched to another algorithm.

Engine 1 can run Acusearch or Facial Recognition. Engine 2 can only run Acuseek algorithm. Perimeter and motion2.0 are not supported for the current version(5.05.335)

02 Product How to

How to Use Acuseek NVR

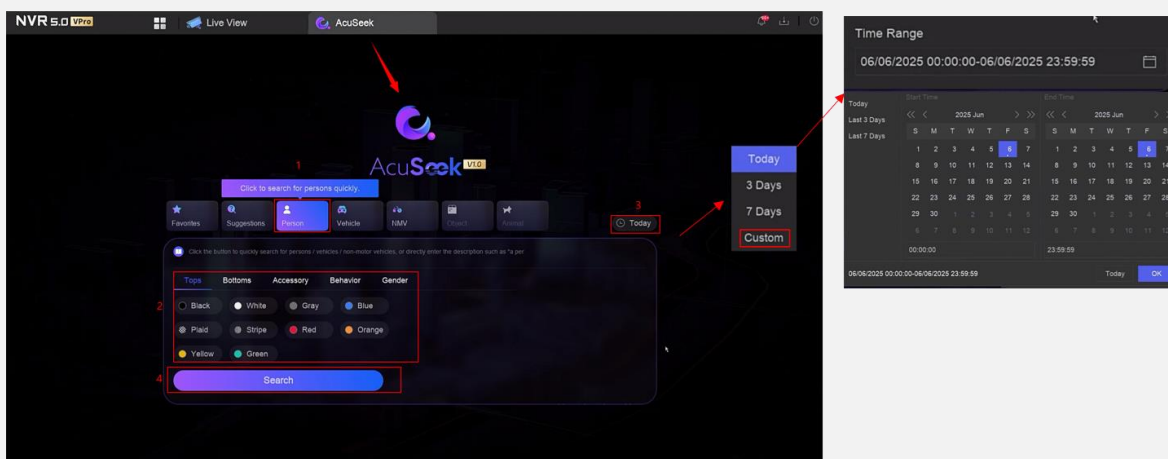
1.3 Use Acuseek on the GUI---Take Person as an example

One way, click "Acuseek", "Person", "Attribute(Tops)", "Date(Today)", "Search" in sequence as shown in the following figure.

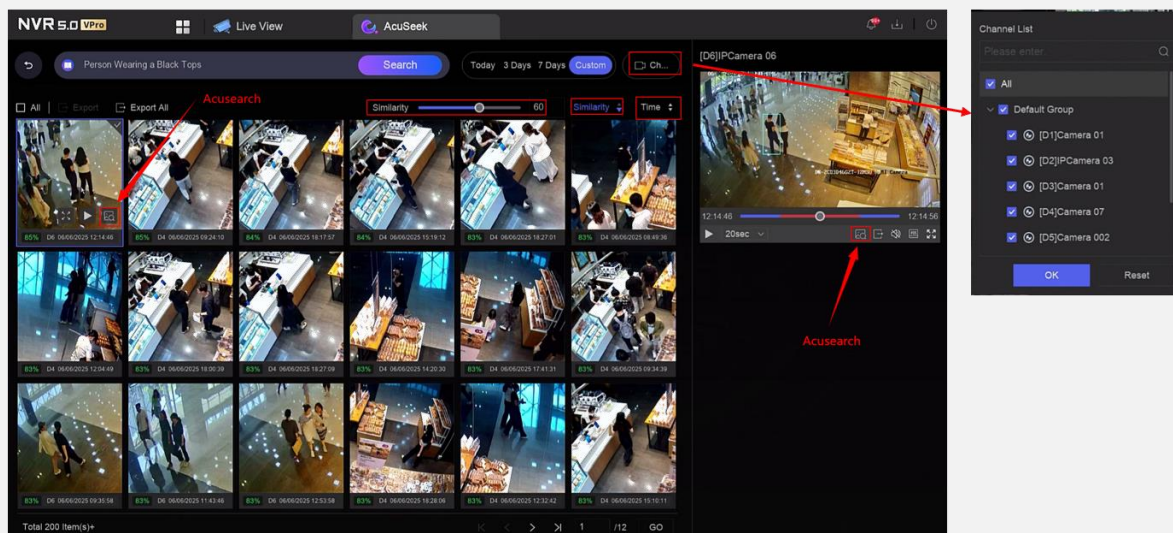
Another way, input with the format of [Adjective + Target] (currently supported target types: person, vehicle, non-motor vehicle) to obtain more accurate search results. For example, "a child with a hat", "a black SUV", "a bicycle".

Note:

Acuseek supports simultaneous retrieval with 5 keywords. You can enter up to 5 keywords for a search, and the system will return results based on the combination of these keywords.



On the result display interface of Acuseek, the search results can be adjusted through parameters such as "Similarity", "Time", "Date", and "Channel".



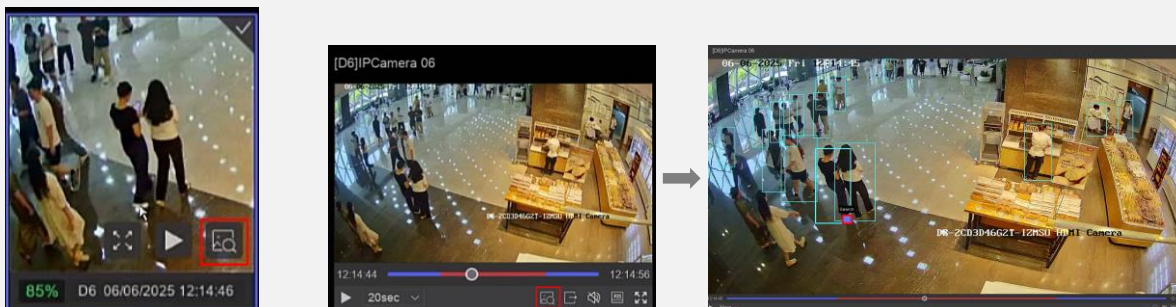
Note

It supports displaying up to 200 search results at most

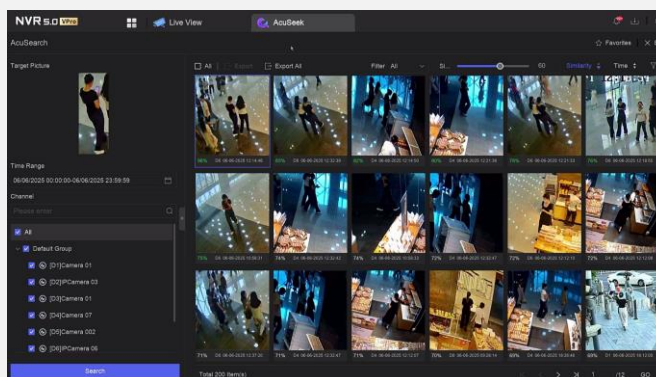
02 Product How to

How to Use Acuseek NVR

After selecting the video, you can click the "🔍" to use the Acuseek function



Method 1:
Acuseek is based
on the text input by
Acuseek

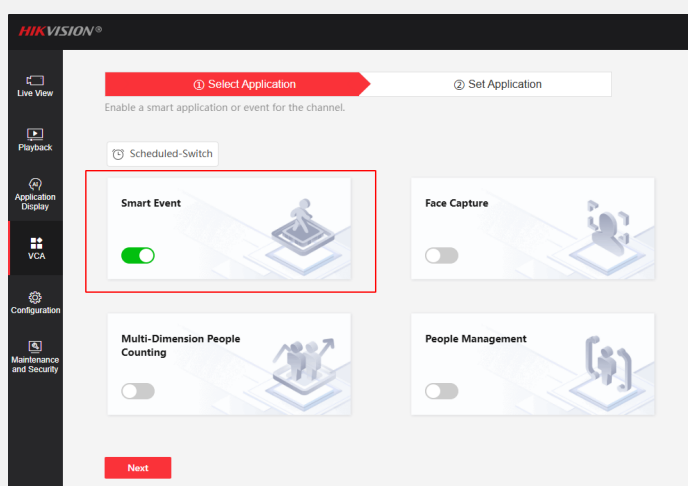


Method 2:
Acuseek any
target in the
whole frame

2 Web

2.1 Log in to the web of camera and switch to the corresponding mode:

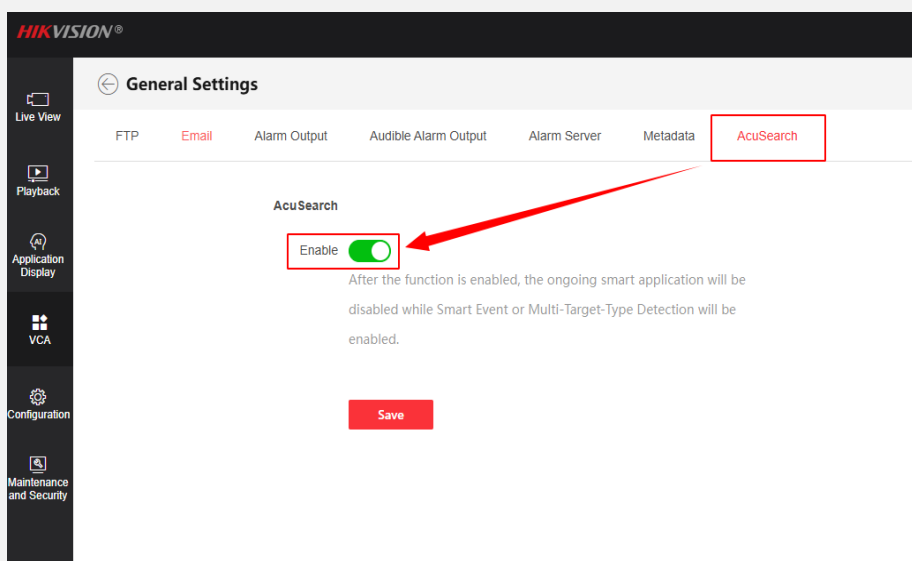
Log in to the web of the device and click "VCA" – "Select Application" – "Smart(Multi-Target-Type Detection)" as shown in the following figure, then click "Save".



02 Product How to

How to Use Acuseek NVR

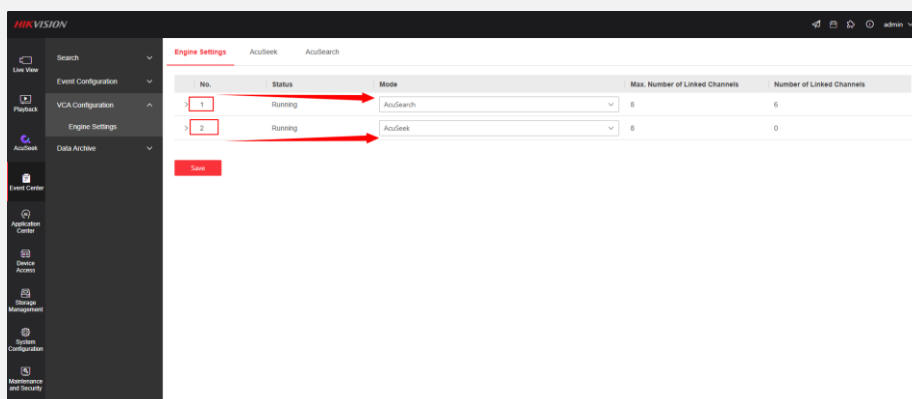
After the camera restarts, click "VCA" – "Set Application" – "General Settings" – "Acusearch" as shown in the following figure. Click "Enable" and "Save".



2.2 Engine configuration

Click "Event Center" – "VCA Configuration" – "Engine Settings" – "Engine Settings" as shown in the following figure.

Engine 1 switches to Acuseek algorithm. Engine 2 switches to Acuseek algorithm



Acusearch

Unloaded

Facial Recognition

Acusearch

Acuseek

Unloaded

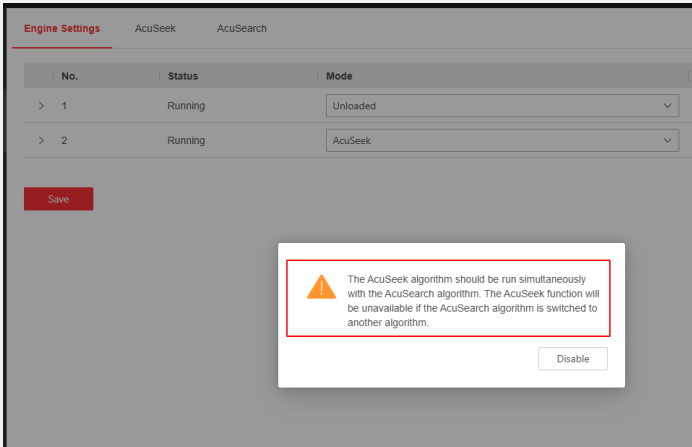
Acuseek

02 Product How to

How to Use Acuseek NVR

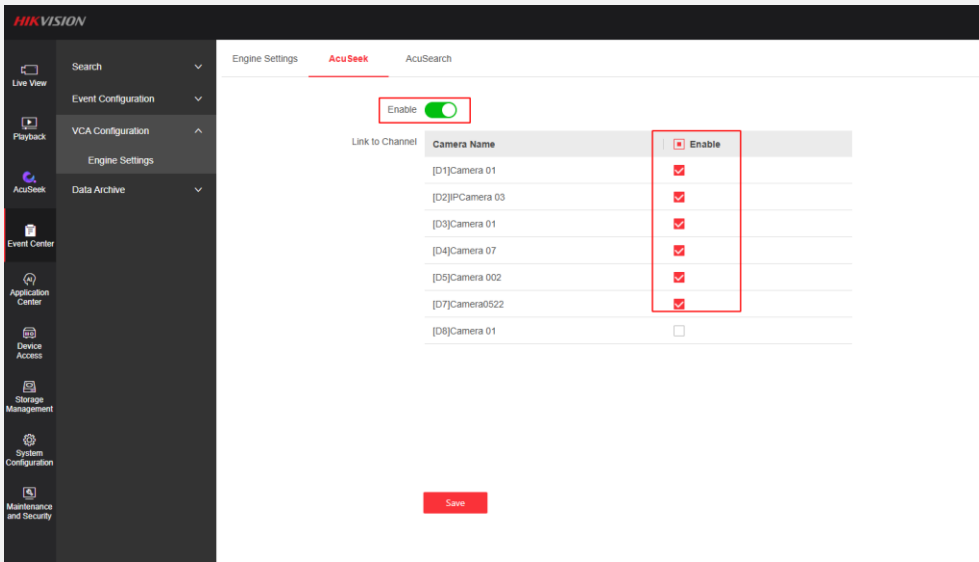
Note

The AcuSeek algorithm should be run simultaneously with the AcuSearch algorithm. The AcuSeek function will be unavailable if the AcuSearch algorithm is switched to another algorithm. Engine 1 can run Acusearch or Facial Recognition. Engine 2 can only run Acuseek algorithm. Perimeter and motion2.0 are not supported for the current version(5.05.330)



2.3 Enable Acusearch and Acuseek

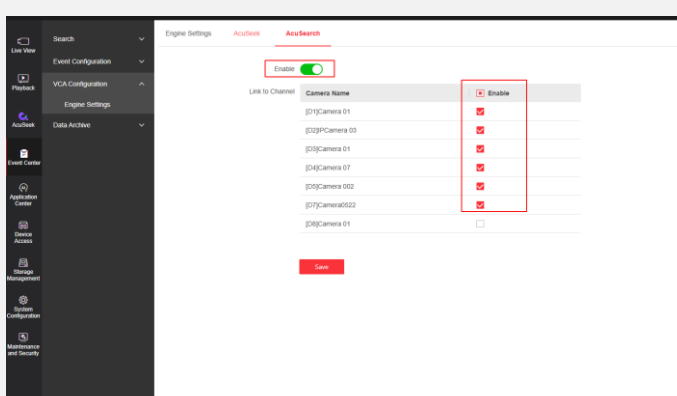
Click “Event Center” –“VCA Configuration”– “Engine Settings” "- “Acusearch” as shown in the following figure. then enable cameras and click “Save”.



Click “Event Center” –“VCA Configuration”– “Engine Settings” "- “Acuseek” as shown in the following figure. then enable cameras and click “Save”

02 Product How to

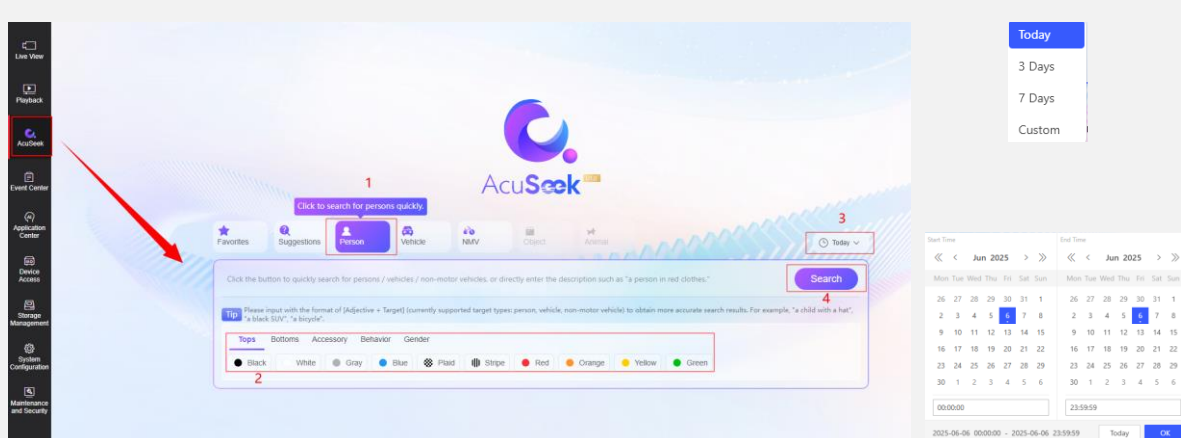
How to Use Acuseek NVR



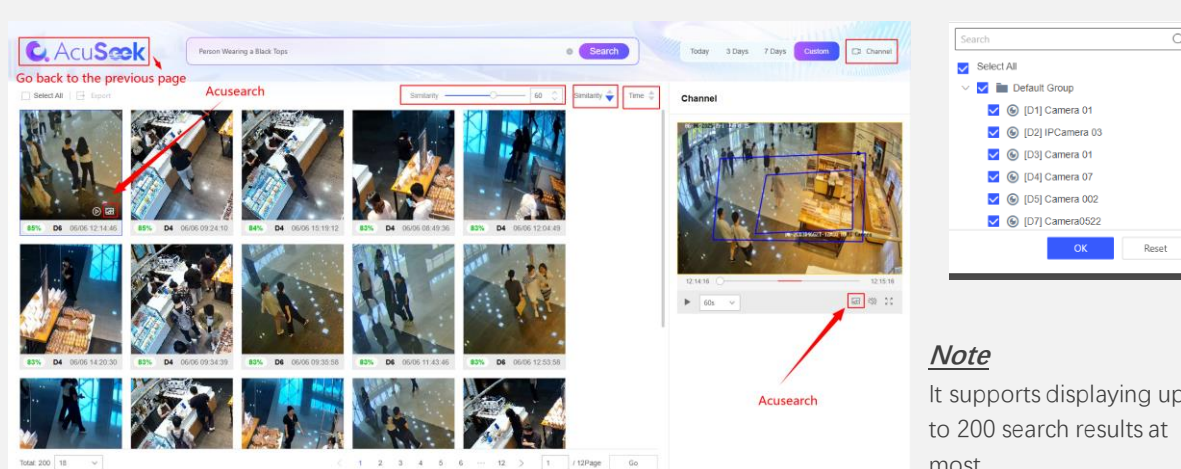
2.4 Use Acuseek on the WEB----Take Person as an example

One way, click "Acuseek"、"Person"—、"Attribute(Tops)"、"Date(Today)"、"Search" in sequence as shown in the following figure.

Another way, input with the format of [Adjective + Target] (currently supported target types: person, vehicle, non-motor vehicle) to obtain more accurate search results. For example, "a child with a hat", "a black SUV", "a bicycle".



On the result display interface of Acuseek, the search results can be adjusted through parameters such as "Similarity", "Time", "Date", and "Channel".



Note
It supports displaying up to 200 search results at most.

03 Product Q&A

Question 1 - The camera is not in Acusearch-supported mode, can the NVR side switch it?

Answer:

Yes, it can switch.

Question 2 - Does Acuseek support searching for targets by person name?

Answer:

No, it does not.

Question 3 - HCP support Acuseek?

Answer:

Not currently supported, but it is planned to be added in version 3.0.1.

Question 4 - Does the solar camera model DS-2XS2T41G1 support mounting on a pole with a clamp?

Answer:

Support, this camera comes with a tripod and a mounting clamp in the package.

Question 5 - What is the composition of the desiccant inside the camera?

Answer:

For platforms E9 and later, G series follows G5 and later, H series follows H8 and later. Among with types with C are unsupported(such as RC, HLC) , while others are supported.

Question 6 - With the camera having NAS, SSD, and SD card, what is the priority for recording?

Answer:

NAS > SSD > SD

Question 7 - Does the H8 platform camera of DF8 support linked sound and light alarms in the facial blacklist?

Answer:

Not supported, only smart events and alarm inputs support linked sound and light alarms.

Question 8 - Does the G5 platform support irregular quadrilaterals for privacy masking?

Answer:

V5.7.12 build221201 and later versions support.

03 Product Q&A

Question 9 - How much buffer space does the camera have, and how long can it store the pre-recorded video?

Answer:

The buffer space is 6M. If it is VBR, the storage time cannot be accurately estimated. Calculated based on a CBR, the maximum pre-recording time at 8192kbps is 6s, at 4096kbps is 12s, and at 2048kbps is 24s.

The above times are under ideal conditions with a very stable bit rate. If the video content is complex, the actual pre-recording time maybe less than the calculated time.

Question 10 - What parameter configuration file will not overwrite websockets parameters after importing?

Answer:

The user parameters and the web sockets, SDK, Bonjour, and SSH settings under the network section will not be overwritten after importing to the parameters file.

Question 11 - What is the composition of the desiccant inside the camera?

Answer:

The composition is 95% 5A-50 desiccant + 5% color-changing orange gel.

The main components of 95% 5A-50 desiccant are: silica dioxide and alumina.

The main components of 5% color-changing orange gel are: silica gel + methyl violet.

Question 12 - Does the metadata information of the camera's face capture include face attributes?

Answer:

In the best shot mode, it is not supported; in the quick shot mode, it is supported.

Question 13- The self-signed certificate exported from camera A, can it be used on camera B?

Answer:

Not Support

04 Survey

An informative and inspiring newsletter needs your continual contributions and feedback, please feel free to submit your comments in this survey by clicking the link or scanning QR code: <https://www.surveymonkey.com/r/8GFLXDZ>

It will take you 2 minutes to complete. Thanks for your time in advance.

Hikvision Europe Monthly External Technical Newsletter Survey

