

# *HIKVISION EUROPE*

## Monthly External Technical Newsletter

---

### CONTENTS

Product How to  
Product Q&A

June 2025

# Main Contents

## 01 Product How to

- How to use Acuseek on GUI5.0
- HiTools Delivery V1.5
- Three ways to submit password and unbind case in EU

## 02 Product Q&A

- What's the default path of the file exported from the Hik-Connect Team mode?
- What's the storage duration of events in the Alarm Module?
- What's the maximum number of events stored in the Alarm Module?
- .....

*Editor-in-Chief: John Wu | Editor: David Jin | Executive Editor: Effie Ding*



### **Contributions and feedback**

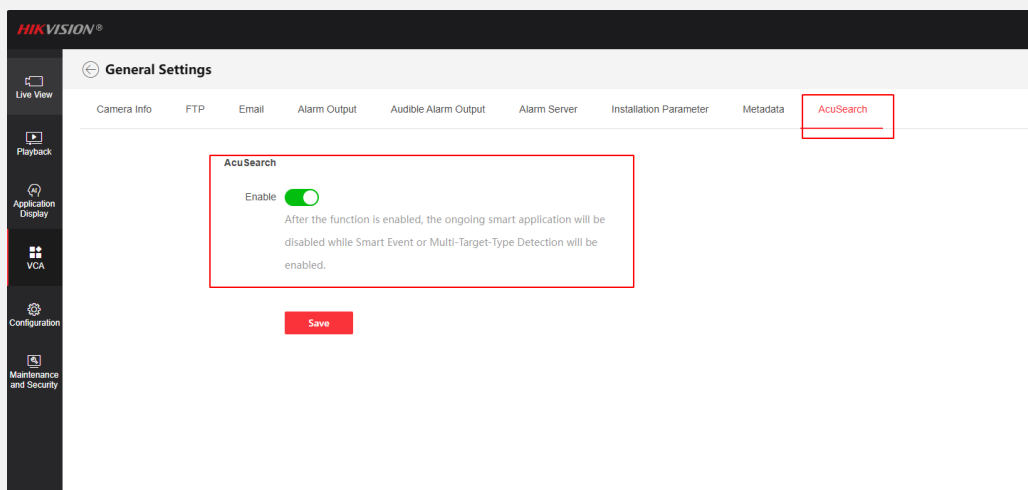
An informative and inspiring newsletter needs your continual contributions and feedback. Please feel free to submit your comments to [product.eu@hikvision.com](mailto:product.eu@hikvision.com).



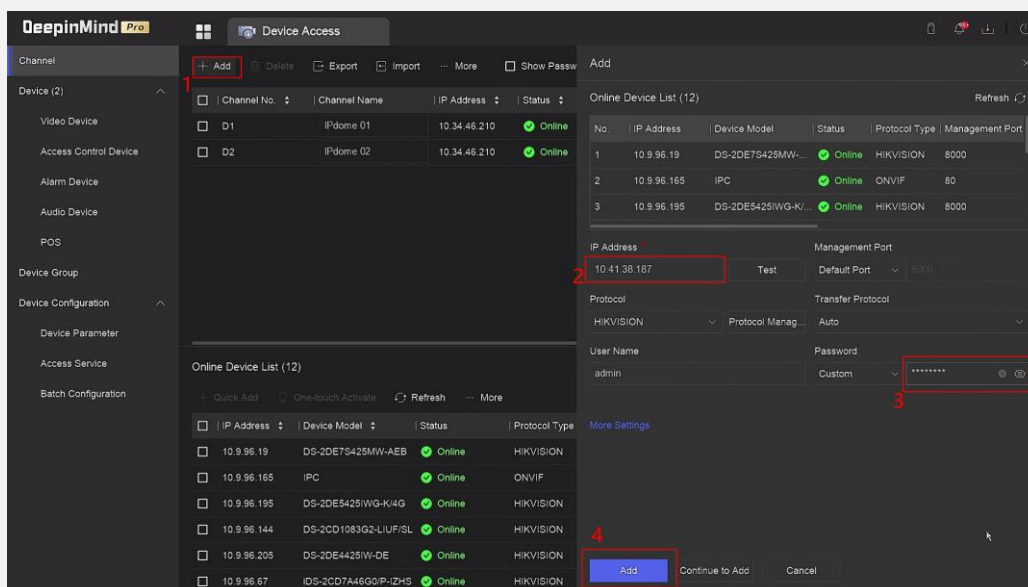
# 01 Product How to

## How to use Acuseek on GUI5.0

Step 1: The camera switches to the smart application that supports Acusearch



Step 2 : Add the camera.



Step 3 : Enable Engine

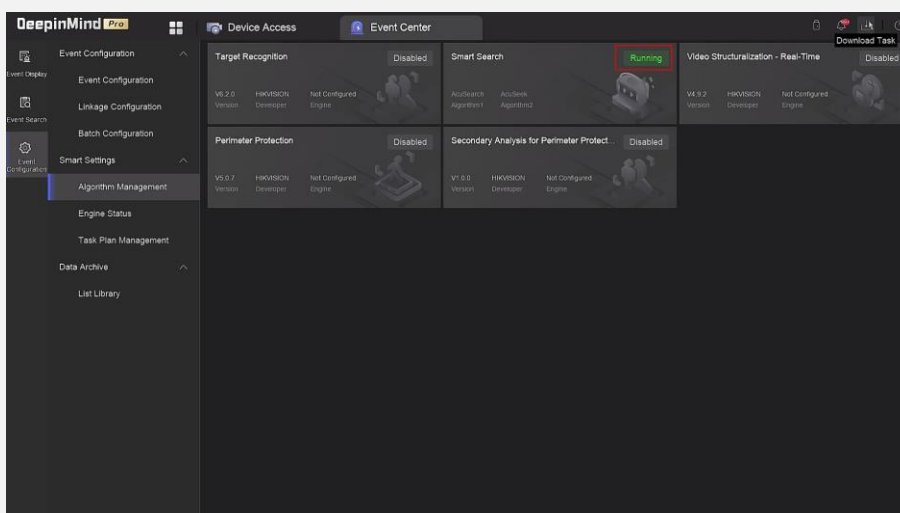
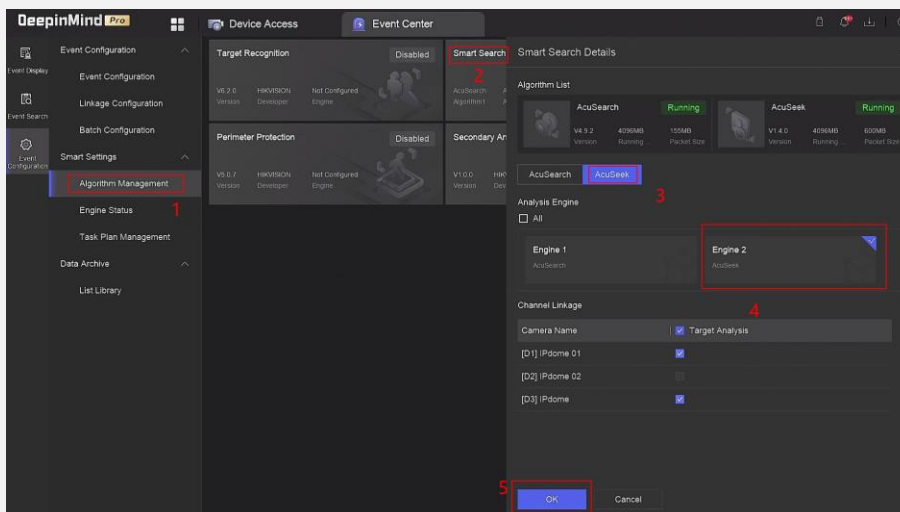
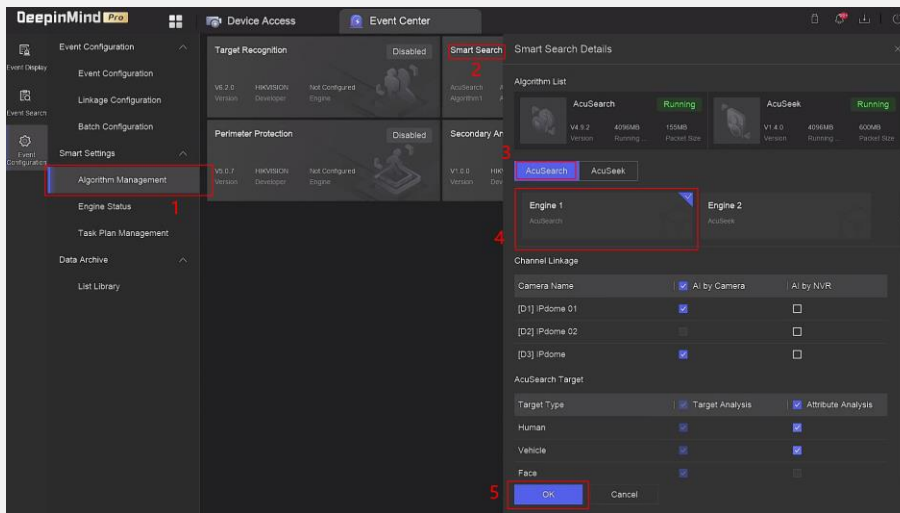
You can configuration engine on Event Center—Event Configuration—Smart Settings—Algorithm Management—Smart Search

Two engines, one enable Acusearch, the other enable Acuseek

If the camera supports Acusearch and Acuseek, after the engine is enabled, the configuration item is checked by default(AI by camera/Attribute Analysis/Target Analysis)

# 01 Product How to

## How to use Acuseek on GUI5.0

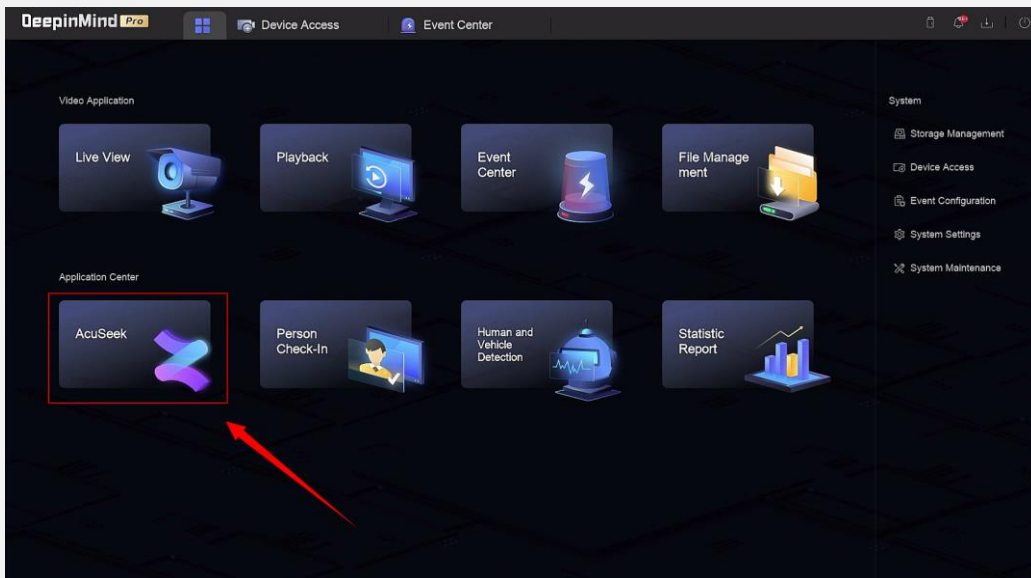


# 01 Product How to

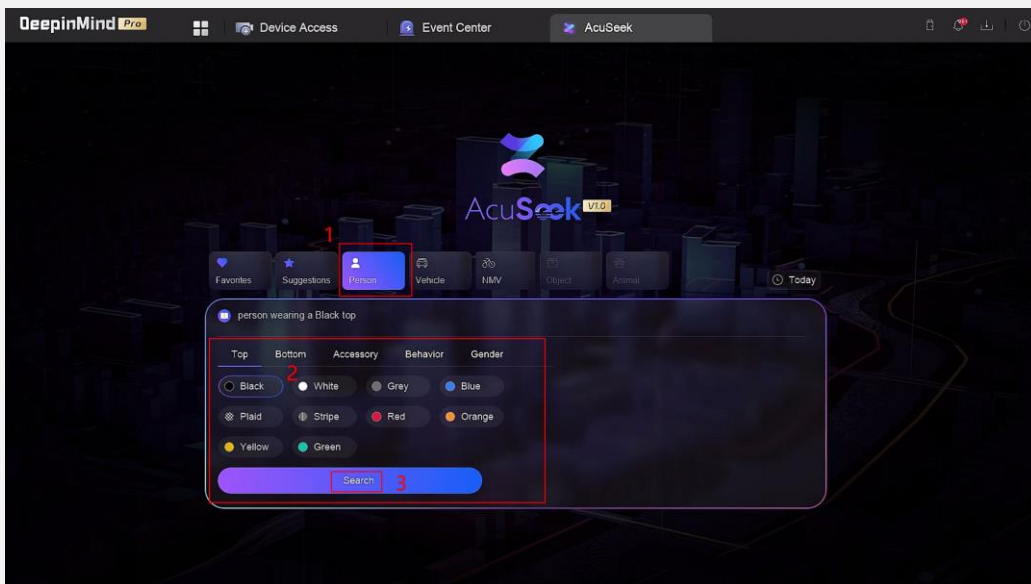
## How to use Acuseek on GUI5.0

### Step 4 : Acuseek

Take Person as an example .By clicking Person, You can select different properties to search or you can enter properties you want to search



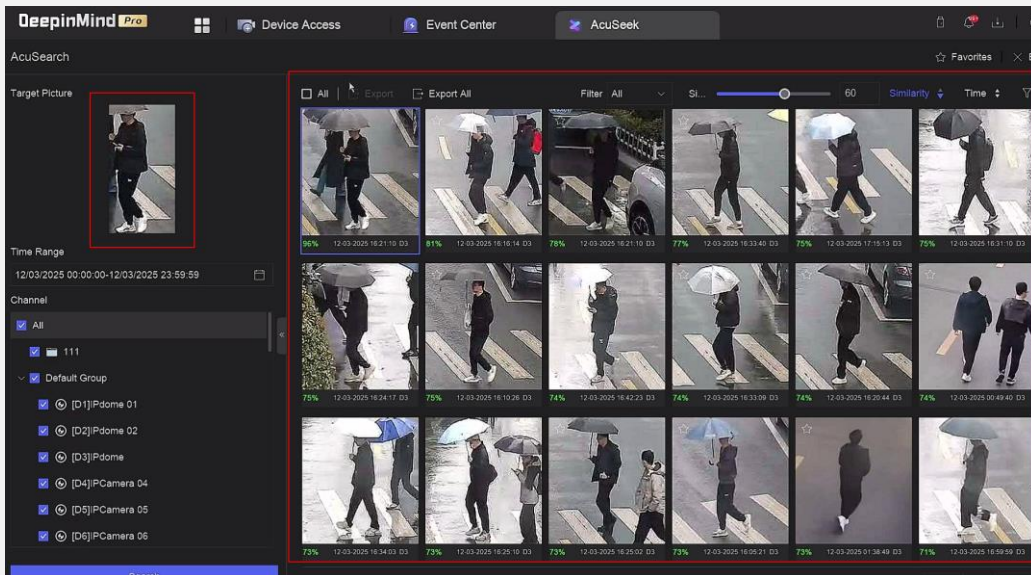
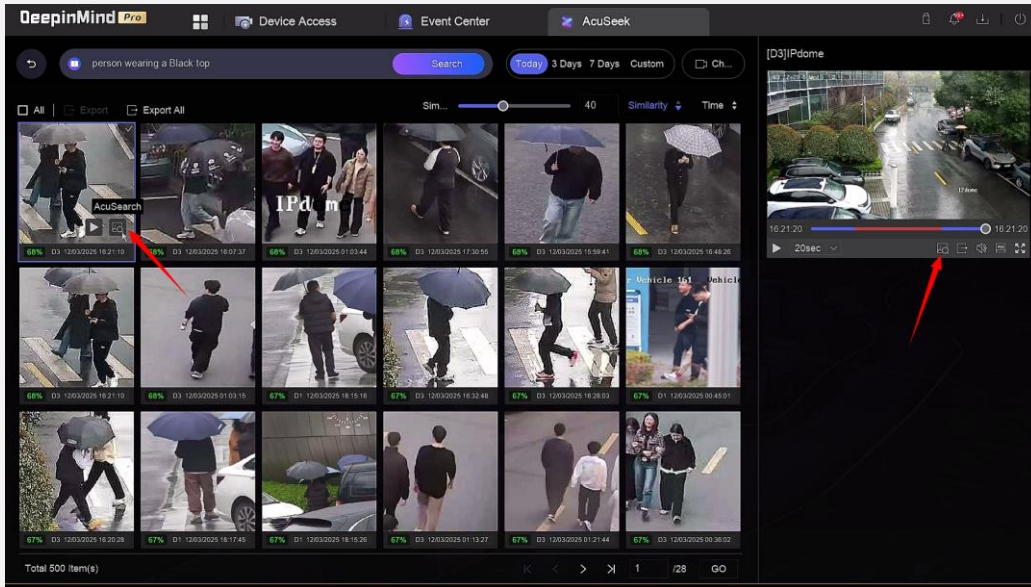
At present, Acuseek only supports Human, Vehicle, and Non-Motor Vehicle related attributes. The Acuseek supports the simultaneous search of up to 6 attributes and can handle a maximum input of 64 English characters.



# 01 Product How to

## How to use Acuseek on GUI5.0

You can Acuseek first ,then Acusearch



# 01 Product How to

## HiTools Delivery V1.5

### Empower Batch Device Management & Configuration

#### Manage More Devices

- Add 70+ types of devices including DeepinMind and security control panels via adaptive (default port), ISAPI, OTAP, or private protocol. All devices support batch activation, configuration, upgrades, and password reset.
- Fully compatible with IPv6 cameras supporting batch activation, configuration, upgrades, and password reset.

**Add**

Adding Mode

☒ IP ☐ IP Segment ☐ Batch Import

Protocol Type

☒ Adaptive ☐ ISAPI ☐ Private ☐ OTAP

Log in using the device's default port. If the port has been modified, select other protocol types.

IP Address \*

User Name \*

admin

Password \*

#### Copy & Apply Parameters

- For access control devices, video intercoms, speed gates & turnstiles, alarm devices, and networking devices, support applying parameters from a selected device's web configuration page to other devices.

HiTools Delivery

Configure More

Common Settings

System

Network

Video/Audio

Image

Storage

Storage Management

Schedule Settings

Event

Record Schedule

Picture Capture

Enable

Record Schedule

Continuous Alarm Motion or... Event

Mon Tue Wed Thu Fri Sat Sun

00 02 04 06 08 10 12 14 16

Recording Parameters

Overwrite

Stream Type

Main Stream Sub-Stream Third Stream

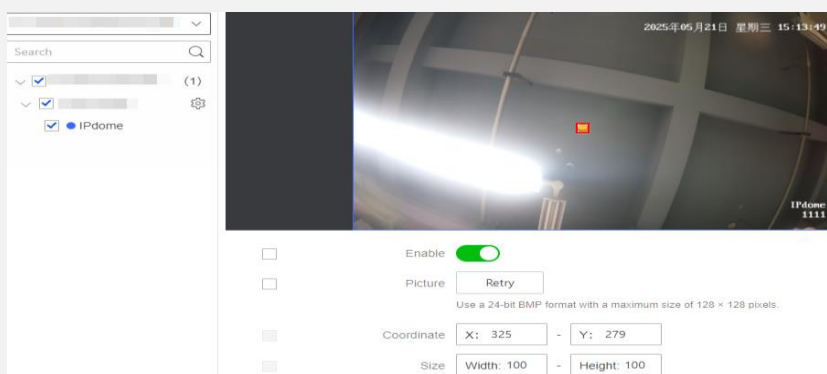
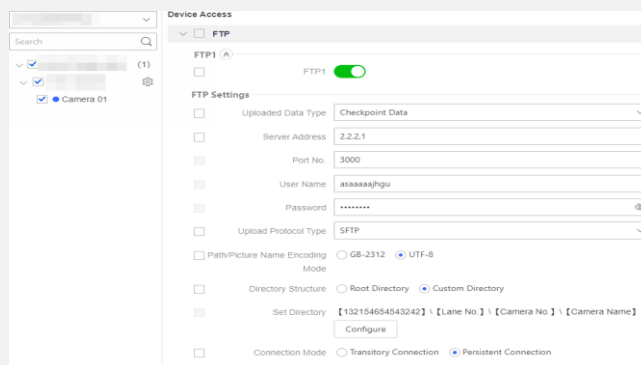
Save

# 01 Product How to

## HiTools Delivery V1.5

### Batch Configure More Parameters

- For ITS products: Batch configure the application mode, FTP, ISUP, arm upload, and License Plate Recognition parameters.
- For cameras: Support adding picture overlays like a company logo to live feeds.
- For DeepinMind HEOP NVSes: Support importing and managing HEOP apps.
- For indoor stations: Support batch setting zone names.



### Feature Enhancement

- Fix an issue where the settings of a pre-configuration template were lost if the template was closed unexpectedly.

[Try Now](#)

# HiTools Delivery



# 01 Product How to

Three ways to submit password and unbind case in EU



## Contents

1. HPP App
  - Password Reset
  - Device Unbind
2. HPP Web
  - Password Reset & Device Unbinding

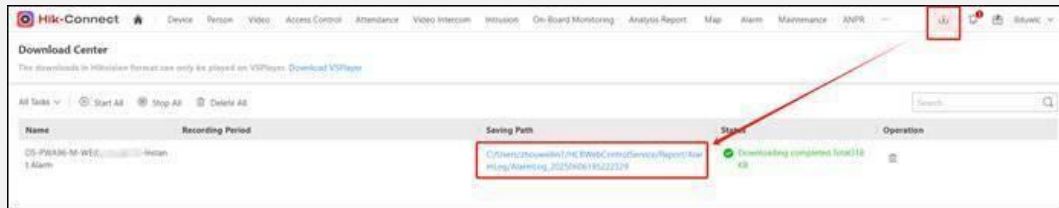
[Download Link](#)

## 02 Product Q&A

**Question 1 - What's the default path of the file exported from the Hik-Connect Team mode?**

Answer:

View in the Download Center



**Question 2 - What's the storage duration of events in the Alarm Module?**

Answer:

30 Days for paid users, 7 Days for regular users.

**Question 3 - What's the maximum number of events stored in the Alarm Module?**

Answer:

Unlimited.

**Question 4 - What's the maximum storage period for the Access Control, attendance records, the Onboard report records, the ANPR pass records, and the Archive records?**

Answer:

5 years for the Access Control and attendance records, 6 months for Onboard report and ANPR pass, permanent for Archive records.

## 03 Survey

An informative and inspiring newsletter needs your continual contributions and feedback, please feel free to submit your comments in this survey by clicking the link or scanning QR code: <https://www.surveymonkey.com/r/8GFLXDZ>

It will take you 2 minutes to complete. Thanks for your time in advance.

### Hikvision Europe Monthly External Technical Newsletter Survey

