

HIKVISION EUROPE

Monthly External Technical Newsletter

CONTENTS

Product How to
Product Q&A

March 2025

Main Contents

01 Product How to

- How to configure Time Zone & NTP Settings on HikCentral

02 Product Q&A

- What is the color code of the camera body?
- When is the Scheduled Restart time for the 5.7.61 version of the solar camera?
- 3 Series Camera DS-2CD3B46G2T-IZHS on G5 Platform. Need to confirm the status of the 8 cores of the Ethernet cable when using POE power supply (1, 2, 3, 6 transmit signals, 4, 5, 7, 8 transmit power)?

Editor-in-Chief: John Wu | Editor: David Jin | Executive Editor: Effie Ding



Contributions and feedback

An informative and inspiring newsletter needs your continual contributions and feedback. Please feel free to submit your comments to product.eu@hikvision.com.

01 Product How to

How to configure Time Zone & NTP Settings on HikCentral

Applicable to

HikCentral Professional: V2.4

Windows Server

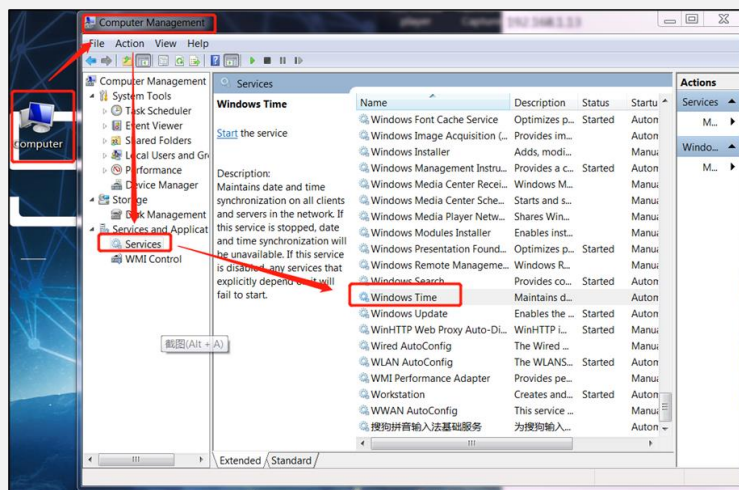
Configuration step

1. Start NTP service (including the system service and HCP)
2. Change the time zone when adding the device
3. Change the Time zone setting of the Control client

Configuration on Windows Server

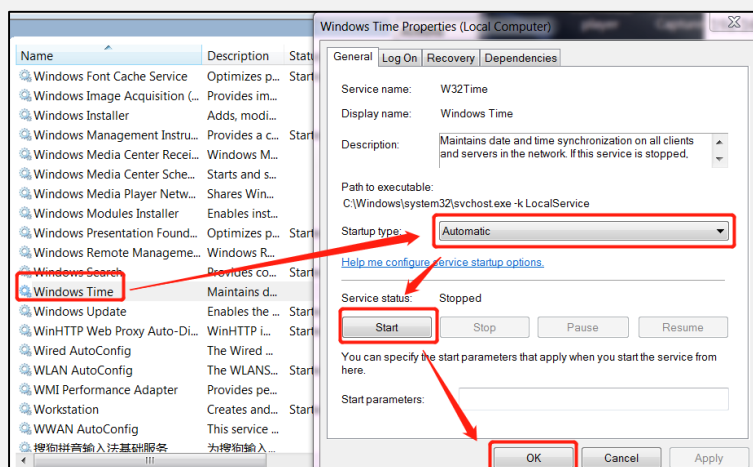
1. Start the Windows Time Service

Please go to Computer——Computer Management——Services



1.1 Enable the Windows Time Service

Double-click the Windows Time——Set the Startup type as Automatic——Start the service.



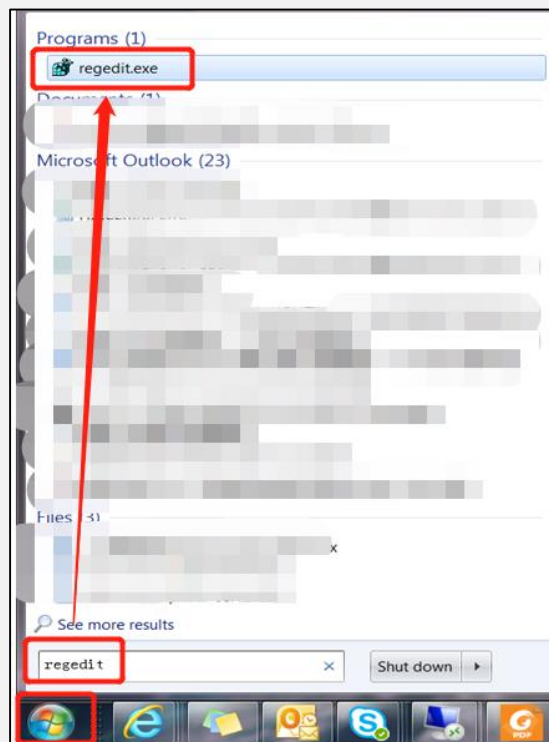
01 Product How to

How to configure Time Zone & NTP Settings on HikCentral

2. Set on W32Time

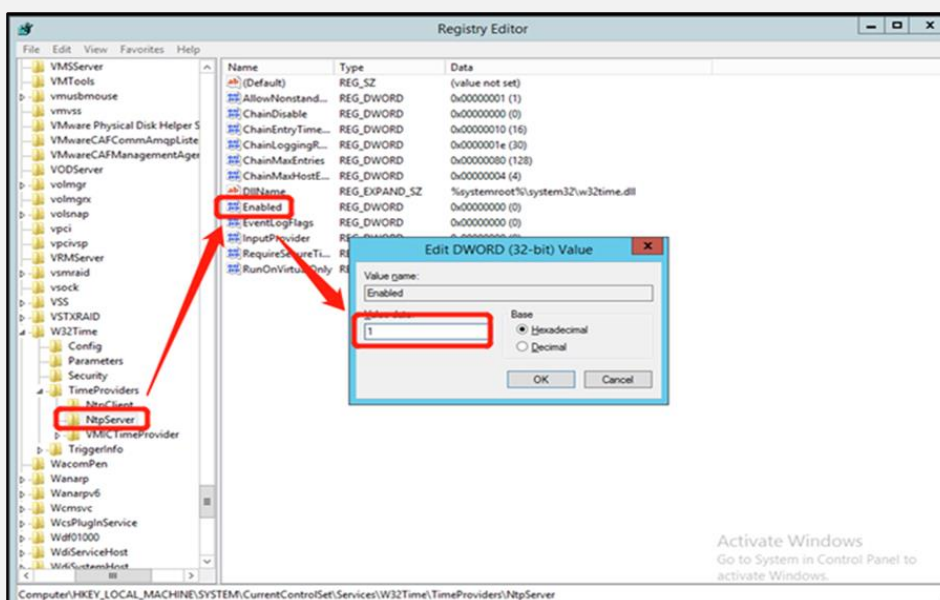
Please go to Registry Editor——HKEY_LOCAL_MACHINE——SYSTEM——CurrentControlSet——services——W32Time

2.1 Search regedit on program and run regedit.exe (CMD Search is also acceptable)



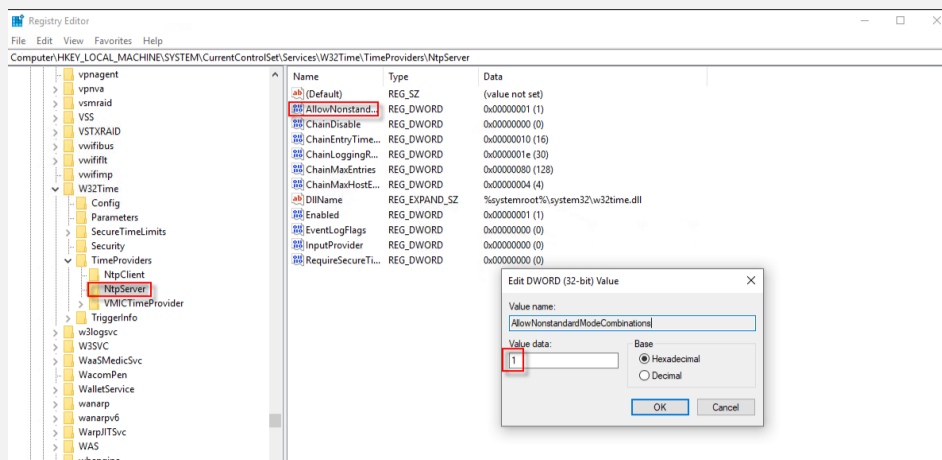
2.2 Enable NtpServer

Set the Value data as 1 below



01 Product How to

How to configure Time Zone & NTP Settings on HikCentral

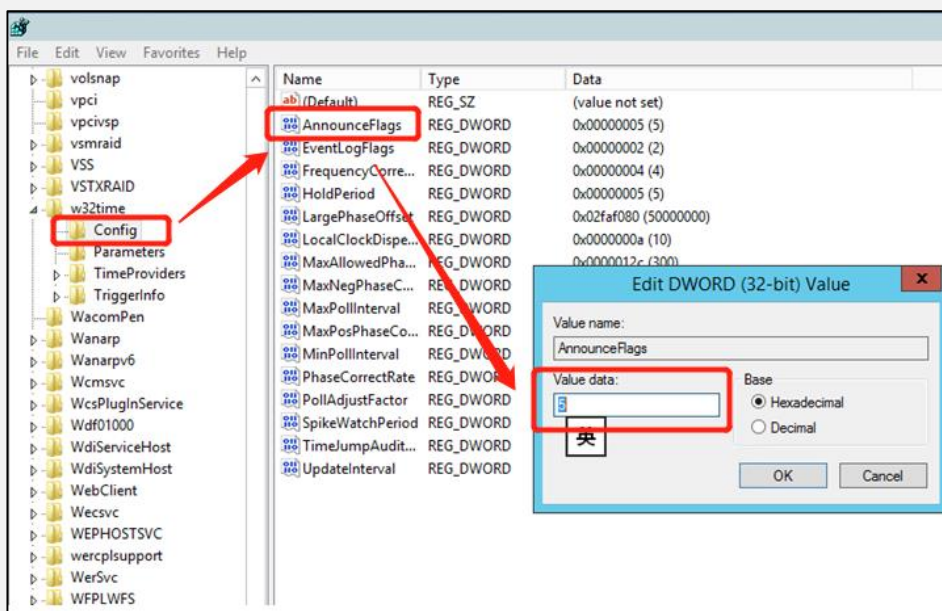


HKEY_LOCAL_MACHINE\SYSTEM\CurrentControlSet\services\W32Time\TimeProviders\NetServer\Enabled.

3. Set the Value of AnnounceFlags

\HKEY_LOCAL_MACHINE\SYSTEM\CurrentControlSet\Services\W32Time\Config

3.1 Find AnnounceFlags below W32Time and set the value as 10



3.2 Restart the Windows Time service on task management.

Net start w32time

01 Product How to

How to configure Time Zone & NTP Settings on HikCentral

```
C:\Windows\system32>net start w32time
Windows Time 服务正在启动。
Windows Time 服务已经启动成功。
```

Use CMD command to restart Windows Time service

Testing of the NTP function

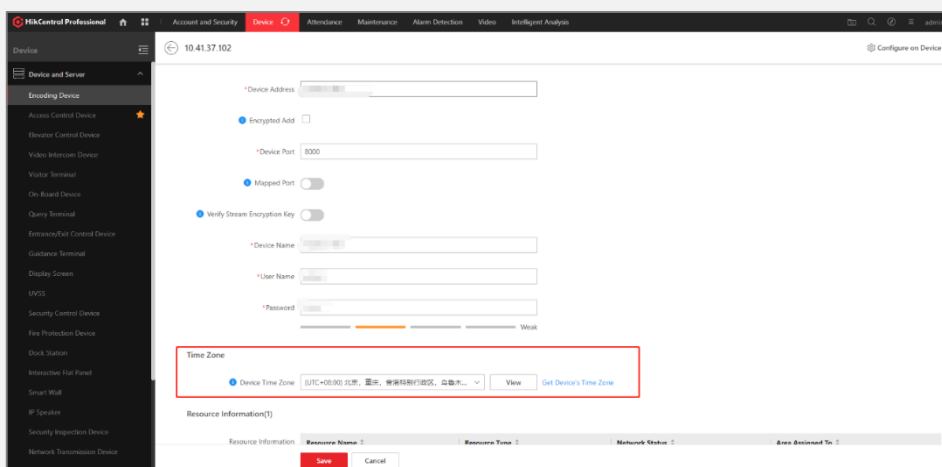
Use the CMD command, input w32tm /stripchart /computer:127.0.0.1, if there is showing the message, it means the function is normal

```
管理员: 命令提示符 - w32tm /stripchart /computer:127.0.0.1
Microsoft Windows [版本 10.0.19044.2728]
(c) Microsoft Corporation。保留所有权利。

C:\Windows\system32>w32tm /stripchart /computer:127.0.0.1
正在跟踪 127.0.0.1 [127.0.0.1:123]。
当前时间是 2023/9/12 13:41:57。
3:41:57, d:+00.0001768s o:+00.0000570s [
3:41:59, d:+00.0002082s o:+00.0000708s *
3:42:01, d:+00.0002687s o:+00.0000475s *
3:42:03, d:+00.0001815s o:+00.0000609s *
3:42:05, d:+00.0002987s o:+00.0001046s *
3:42:07, d:+00.0001904s o:+00.0000643s *
3:42:09, d:+00.0002838s o:+00.0000313s *
3:42:11, d:+00.0001749s o:+00.0000599s *
3:42:13, d:+00.0001886s o:+00.0000601s *
3:42:15, d:+00.0002504s o:+00.0000873s *
3:42:17, d:+00.0002101s o:+00.0000708s *
3:42:19, d:+00.0001744s o:+00.0000568s *
3:42:21, d:+00.0002586s o:+00.0000163s ]
```

Operation when adding device to HikCentral

When adding the device to the HCP, please don't forget select the device time zone. After selected on HCP and save, it will auto synchronize to device, no need to change the time zone on device web page manually.



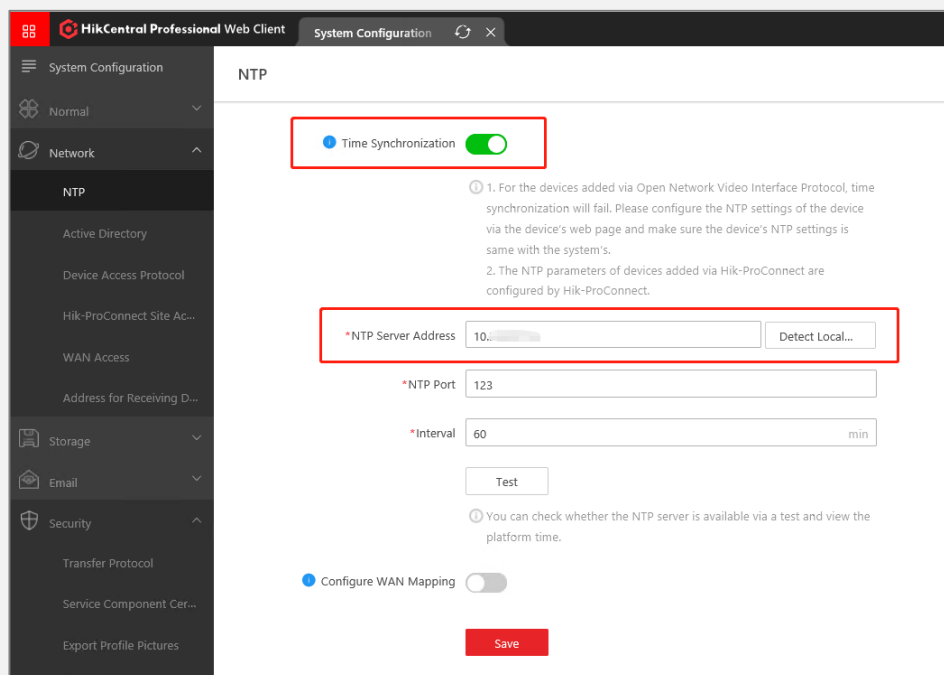
01 Product How to

How to configure Time Zone & NTP Settings on HikCentral

Operation on Web Client of HikCentral

Please log in to Web Client.

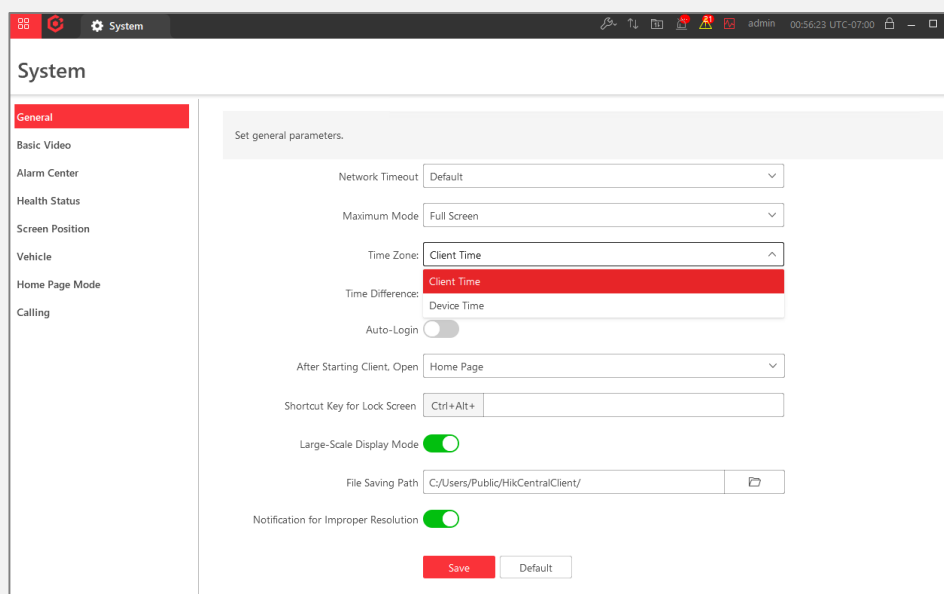
- Find the NTP settings below System Configuration/Network/NTP.
- Enable the Time Synchronization—Input the IP address of NTP server—The NTP port is 123 by default—Set Interval and check if it is working by clicking Test—Save the configuration.



Operation on Control Client of HikCentral

Please log in to Control Client.

Go to system—General—Select the Time Zone as Client time



02 Product Q&A

Question 1 - What is the color code of the camera body?

Answer:

Hik White: approach to RAL9003

Hik Black: approach to RAL9011

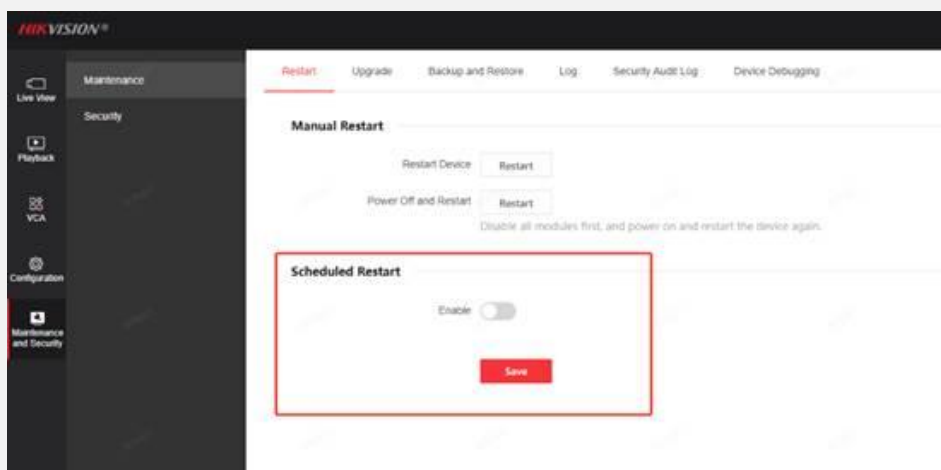
Hik Grey: approach to RAL7022

Hik silver/grey: approach to RAL 9023, glossiness 40 degrees.

Question 2 - When is the Scheduled Restart time for the 5.7.61 version of the solar camera?

Answer:

This feature is turned off by default, and the restart time is randomly from 3:07 am to 3:27 am every Sunday.



Question 3 - 3 Series Camera DS-2CD3B46G2T-IZHS on G5 Platform. Need to confirm the status of the 8 cores of the Ethernet cable when using POE power supply (1, 2, 3, 6 transmit signals, 4, 5, 7, 8 transmit power)?

Answer:

Both 1 2 3 6 and 4 5 7 8 support power supply, and 1 2 3 6 transmit data.

03 Survey

An informative and inspiring newsletter needs your continual contributions and feedback, please feel free to submit your comments in this survey by clicking the link or scanning QR code: <https://www.surveymonkey.com/r/8GFLXDZ>

It will take you 2 minutes to complete. Thanks for your time in advance.

Hikvision Europe Monthly External Technical Newsletter Survey

